

Hiab Loglift 251 S

Capacity 24 tm





Tree-length timber handling in a class of its

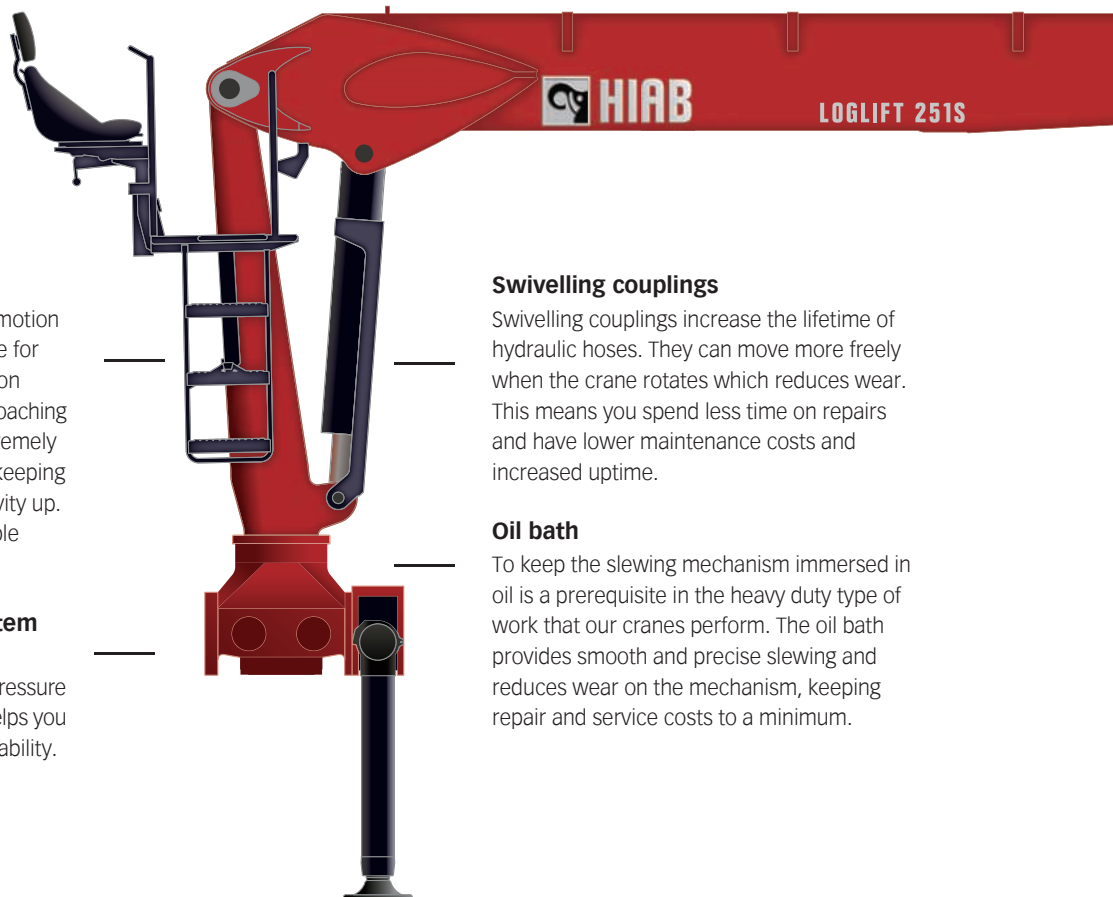


own

Hiab Loglift 251 S

The 251 S – larger payloads and more efficient loading

The power-to-weight ratio of the Hiab Loglift 251 S is in a class of its own. Light and durable structure makes larger payloads and more efficient loading possible. The safe control position with its adjustable high seat and ergonomically designed controls guarantee a comfortable working day. Together, the components of the Hiab Loglift 251 S increase reliability and efficiency. Need for maintenance is low and this Hiab Loglift model has a track record of extraordinary long service life.



Double rack slewing

Double rack slewing gives the slewing motion a smooth start and is especially suitable for heavy duty applications. The end cushion dampens slewing effectively when approaching the limit. The double rack design is extremely reliable and also gives a high torque – keeping maintenance costs down and productivity up. Rack and pinion slewing provides reliable operation even on inclines or slopes.

Electronic warning and stop system

An electronic warning and stop system provides safety. By displaying cylinder pressure and other optional feedback signals it helps you improve manoeuvring efficiency and stability.

Swivelling couplings

Swivelling couplings increase the lifetime of hydraulic hoses. They can move more freely when the crane rotates which reduces wear. This means you spend less time on repairs and have lower maintenance costs and increased uptime.

Oil bath

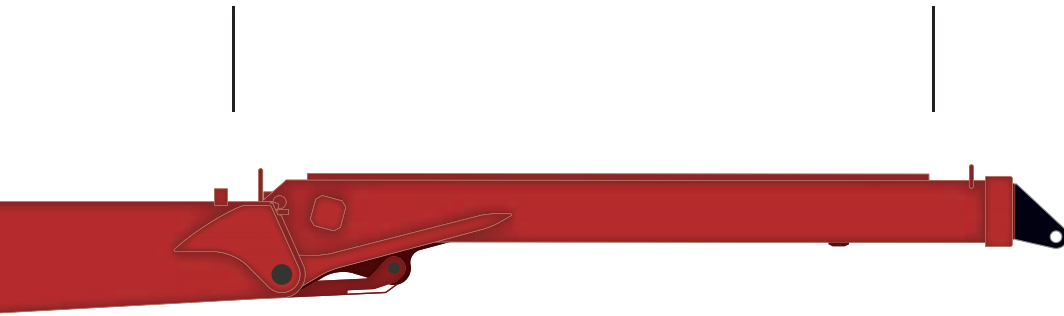
To keep the slewing mechanism immersed in oil is a prerequisite in the heavy duty type of work that our cranes perform. The oil bath provides smooth and precise slewing and reduces wear on the mechanism, keeping repair and service costs to a minimum.

Extra working lights

Extra working lights improve safety. The standard halogen bulb lights up immediately when turned on and has a soft, yellow light – whereas the Xenon bulb is more powerful and lasts longer. Either type of extra working light will improve productivity and are very helpful when handling loads in dark conditions.

Side supports for stability

Side supports, fitted on each boom extension, stabilize the boom laterally and minimize play.



Log heel

An optional log heel facilitates the handling of full-length timber. Placing timber against the log heel makes it possible to lift the load up onto the truck platform, safely and efficiently.

JIC couplings

With JIC couplings the time it takes to service a crane is shorter. No additional parts or packing are needed, leading to secure coupling with mechanical tightening only. The service intervals are longer, keeping maintenance costs down.



Features and benefits

The Hiab Loglift 251 S is available with a wide selection of boom systems. By combining the length of the first and second boom as well as an extension you get an outreach between 7.9 and 8.9 metres and a boom system that can be perfectly matched to your assignments. Both the continuously adjustable high seat and ergonomically positioned controls ensure smooth operation.

S-boom system

Fast load cycles are especially important in recycling and timber handling. Such operations also require a boom system that endures the strain of repetitive load cycles day in, day out. The S-boom system can be customized for different outreaches. An S-boom crane can be parked stretched out over the load or platform, or over the truck cab.

Internal hose routing (optional)

The hydraulic hoses are well protected within the boom system. This keeps maintenance costs down and increases productivity. The highly wear resistant hoses have an impressively long service life and are easy to change. Two functions can be routed to the boom tip, making sure you can use the tools required for your application.



Stabilizers

Automatic stabilizer beam lock

Using hydraulic stabilizer extension beam locks to secure the beam for transport is fast and easy, and requires no manual handling. The beam is automatically locked in the right position by means of a check valve. This is a straightforward solution that adds to the overall safety.

Separate stabilizer beam

The stabilizer beam is separate from the crane base. It is mounted behind cabin or at the rear of truck and is available with two different extensions strokes to give the stability needed.

Extra large footplates (optional)

Extra wide circular footplates are available as an accessory. These are useful when the crane has to be stabilized on an area where the surface has to be protected, for example asphalt, or when the ground is unstable.

Controlling

High seat

The high seat is comfortable, ergonomic and easy to access via its spacious steps. The seat can be adjusted upwards, downwards, forwards and backwards – enabling you to find the perfect seating position for your body. You get an excellent view of the working area with a minimum of blind angles. The control valve is strategically tucked in low, underneath the seat. This unique solution improves the driver's safety, takes away disturbing heat, and minimizes the turning radius.



Handling long and heavy logs day after day

The demanding handling of long logs requires special properties from a crane. The structure, components and durability of the Hiab Loglift S-boom cranes to handle full length logs are top of the line.



Accessories complete your solution

Appropriate accessories improve flexibility and productivity. Having the right accessories is an ideal way to increase speed and efficiency. Before you decide which tools you need, take some time to think over your line of business – what services you want to be able to offer customers – now and in future.

Timber grapples

Hiab timber grapples are designed for maximized efficiency and demanding work. There are numerous models, each suited to different applications.

High seat hood

The high seat hood is mounted on the high seat and, when not in use, is locked in position with a belt. Two types of hoods are available to match the type of high seat design. Both versions have two windows at the back.

A high seat hood keeps you sheltered from wind, rain and snow. Visibility on both sides is great, thanks to the two large windows at the back of the hood. The hood is easily folded into parking position where it keeps the seat protected during transport.



The high seat hood is fastened to the seat at four points.



Learn more about us

Hiab is the global market-leading brand in on-road load handling solutions. Customer-driven Hiab on-road load handling products and solutions are utilised in moving goods and materials on the road, for example in construction sites, forests, industry, waste handling, recycling and by the defence forces.

Sales and Service network

Cargotec's global network offers extensive services that ensure the continuous, reliable and sustainable performance of our equipment. We have the most comprehensive distribution network in the industry, supporting all Hiab's customers – through sales companies in 23 countries and 65 independent distribution partners, giving us more than 1500 sales and service outlets. This service network guarantees that we are always close to our customers, ready to give advice on applications and provide service and spare parts.

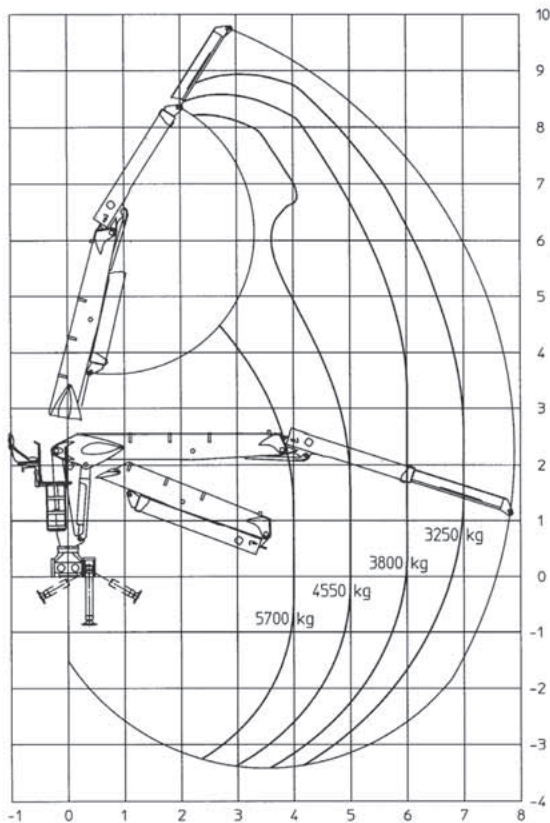
Hiab Loglift 251 S Basic data

Technical data	S 79 ²	S 80 ¹	S 82 ¹	S 84 ²	S 88 ²	S 89 ¹
Max. lifting capacity, net (kNm)	229	235	235	221	221	230
Max. outreach (m)	7.9	8.0	8.2	8.4	8.8	8.9
Hydraulic boom extension (m)	1.65	1.70	1.70	1.65	1.65	1.70
Outreach / Lifting capacity, standard (m / kg)	4.0 / 5700	4.0 / 5800	4.0 / 5800	4.0 / 5600	4.0 / 5600	4.0 / 5700
	5.0 / 4550	5.0 / 4650	5.0 / 4650	5.0 / 4500	5.0 / 4500	5.0 / 4600
	6.0 / 3800	6.0 / 3900	6.0 / 3900	6.0 / 3750	6.0 / 3750	6.0 / 3850
	7.0 / 3250	7.0 / 3350	7.0 / 3350	7.0 / 3200	7.0 / 3200	7.0 / 3300
	-	-	-	8.0 / 2800	8.0 / 2800	8.0 / 2900
	-	-	-	-	-	8.5 / 2700
Loader height (m)	2.59	2.59	2.59	2.59	2.59	2.59
Recommended oil flow (l/min)	80	80	80	80	80	80
	2x80	2x80	2x80	2x80	2x80	2x80
Power needed at rec. oil flow (kW)	37-74	37-74	37-74	37-74	37-74	37-74
Max. Working pressure (MPa)	26	26	26	26	26	26
Slewing system	double	double	double	double	double	double
Slewing angle	415°	415°	415°	415°	415°	415°
Slewing torque, gross (kNm)	42	42	42	42	42	42
Weight, without oil, grapple and stabilizers (kg)	2020	1940	1950	2050	2070	2010

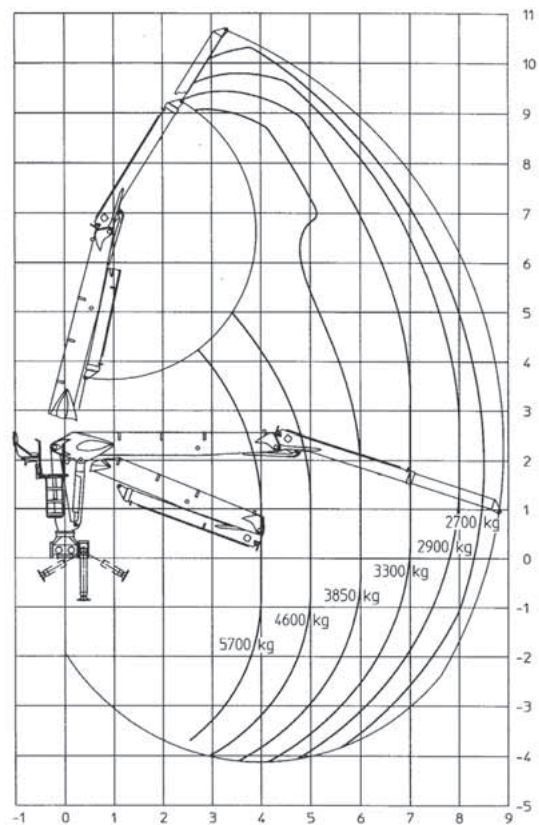
¹ Outside routed hoses

² Inside routed hoses

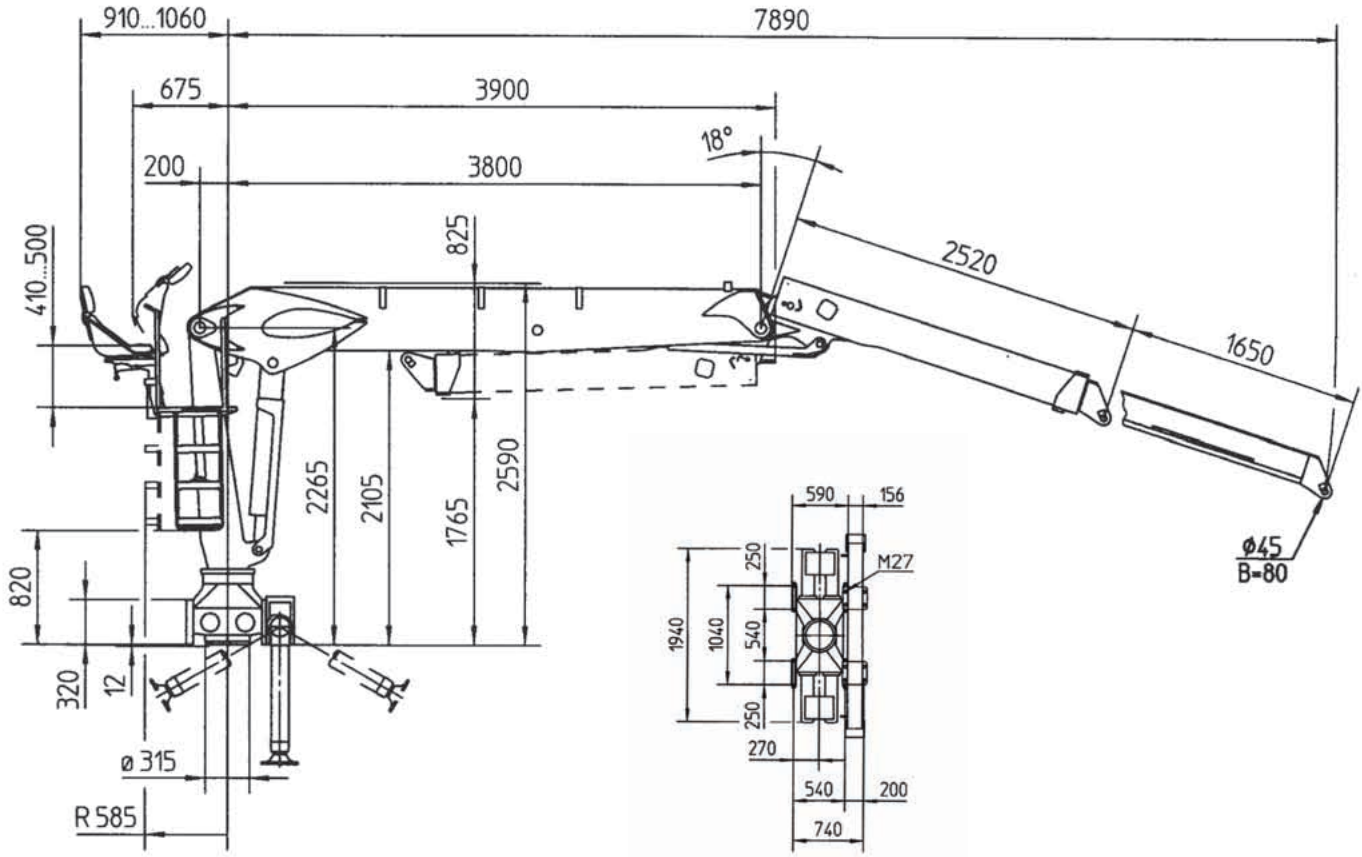
Hiab Loglift 251 S 79²



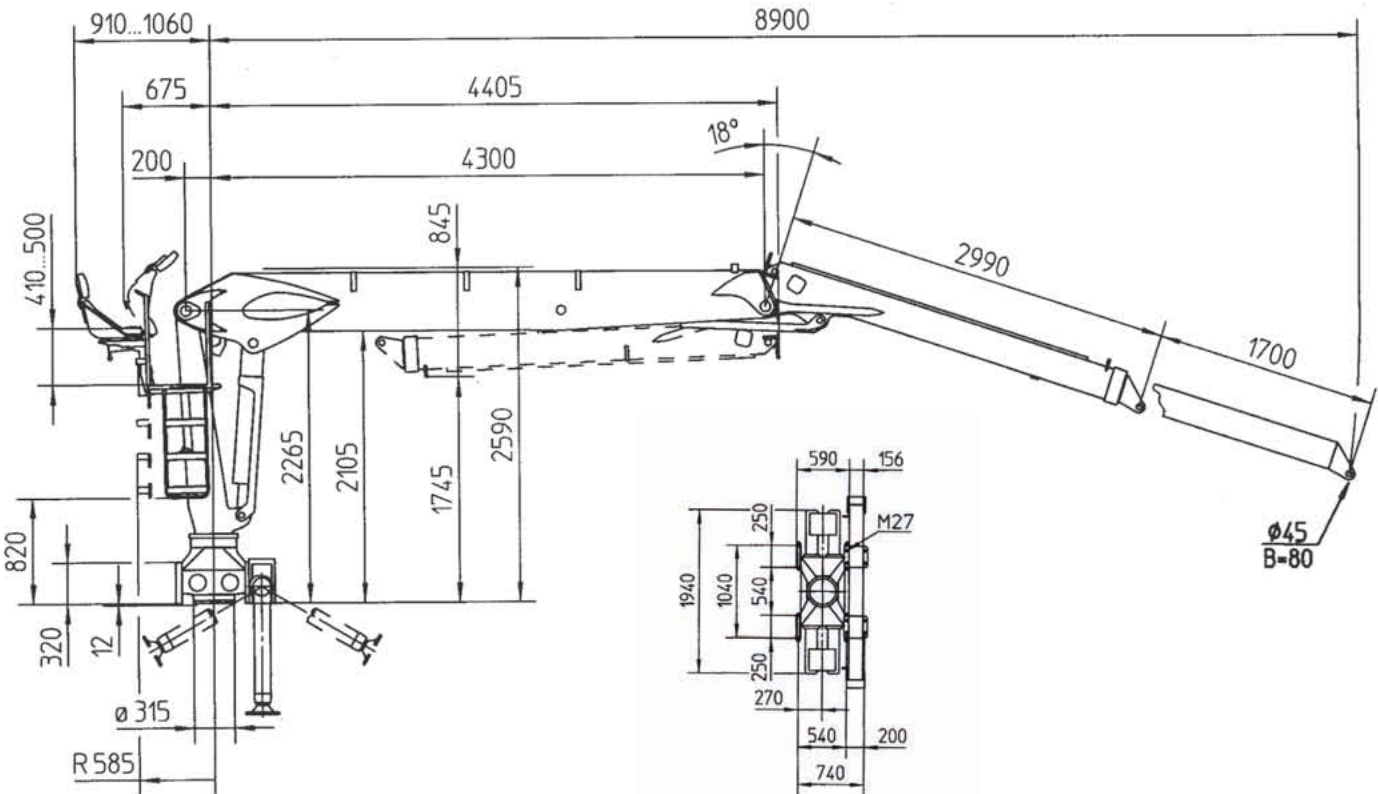
Hiab Loglift 251 S 89¹



Hiab Loglift 251 S 79²



Hiab Loglift 251 S 89¹



Disclaimer. We reserve the right to make changes. Illustrations, drawings and data are not always in accordance with the latest version or standard model in production. The models in the pictures may present special equipment or colours.

Cargotec improves the efficiency of cargo flows on land and at sea – wherever cargo is on the move. Cargotec's daughter brands Hiab, Kalmar and MacGregor are recognised leaders in cargo and load handling solutions around the world.

www.cargotec.com

