

# Loglift Tree-length cranes



A new grip on timber!

# Loglift



## **LOGLIFT – For Your Benefit**

*The LOGLIFT timber cranes are known for their speed and comfort. The ergonomic control position helps you to focus on the essentials, and work appears to do itself. Therefore, a LOGLIFT user's tread is light and back straight even after a long day.*

Transporting timber is hard work; therefore, the tools should be user-friendly in every way. Loglift has paid attention to the smoothness of work for decades, and for this reason, the LOGLIFT timber cranes are fast, durable and easy to use. They are also light, which means even bigger payloads and consequently extra income. Despite their lightness, the durability of the LOGLIFT cranes is excellent, and their power-to-weight ratio is superb.

## **Right Choice**

The demanding handling of long logs requires special properties from a crane. The structure, components and durability of the LOGLIFT tree-length cranes are top of the range. The powerful cranes have been designed to manage reliably even the heaviest logs from day to day, and extremely durable components and optimal structures have been used in them. Due to the extensive equipment range, the cranes can be customized for just the right need. The resale value, which is in a class by itself, tells the most of the quality of the LOGLIFT cranes. Together with swift maintenance and excellent service, it is no wonder that LOGLIFT is the only right choice for demanding timber handling.



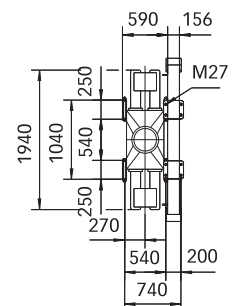
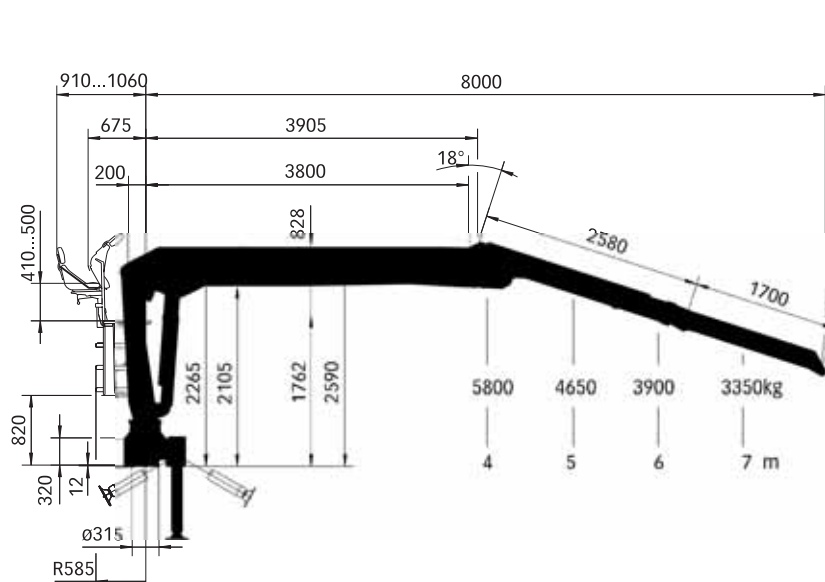
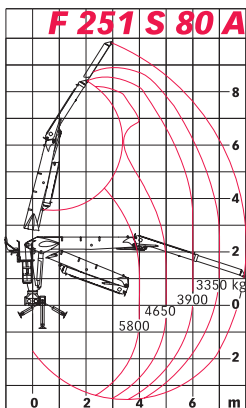
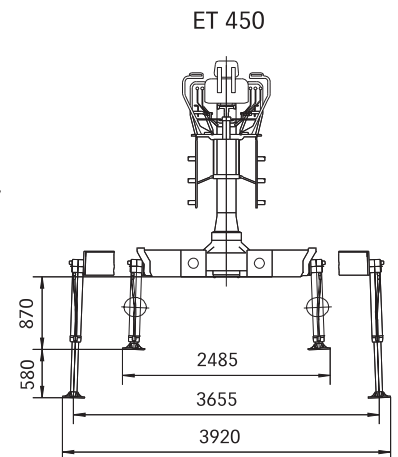
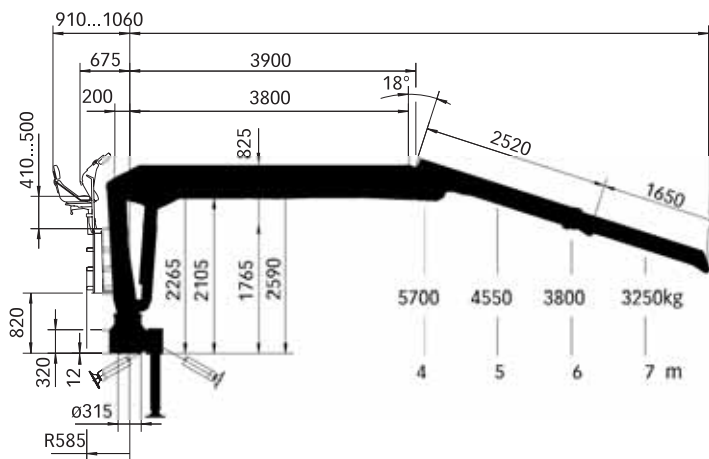
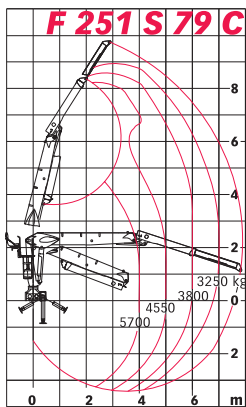
# F 251 S 79 C F 251 S 80 A



Versatile adjustments guarantee good ergonomics



The power-to-weight ratio of the F 251 S is in a class by itself. The light and durable structure makes larger payloads and efficient loading possible. The safe control position with its continuously adjustable seat and ergonomically positioned controls guarantees smooth work. All the components of the LOGLIFT 251 S were selected taking reliability and efficiency into account. For this reason, its need for maintenance is low and service life long.



# Loglift

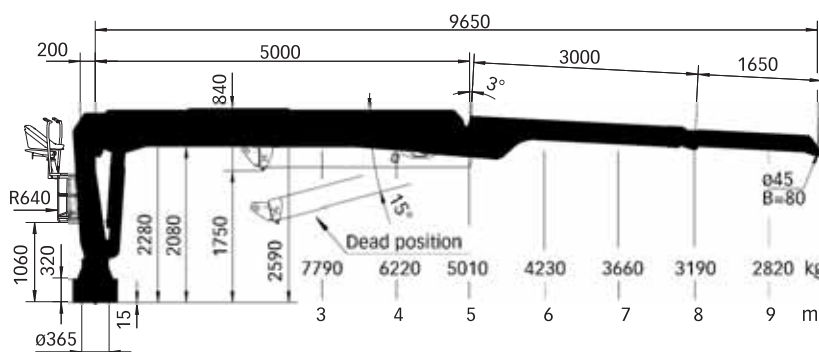
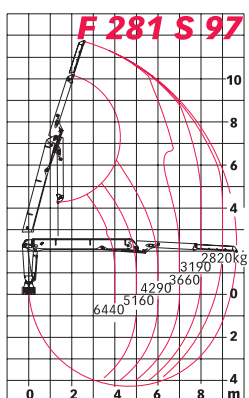
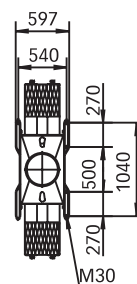
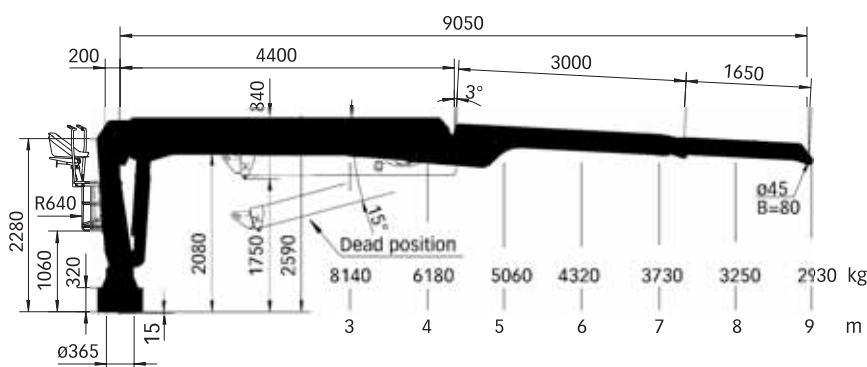
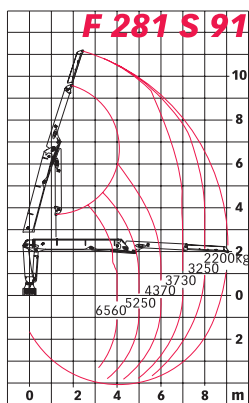
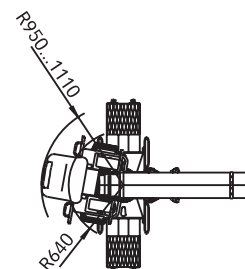
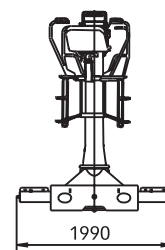
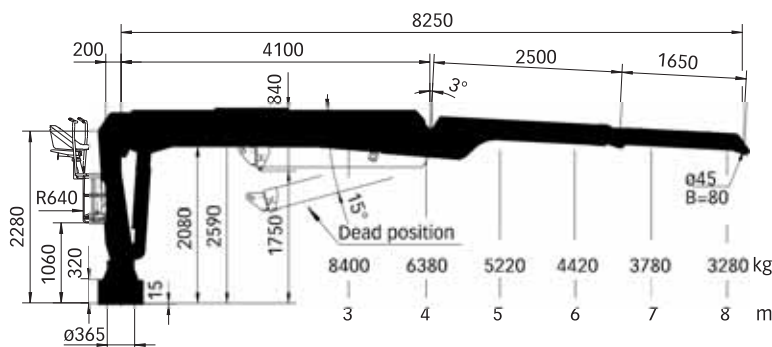
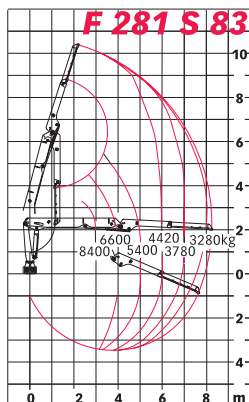
F 281 S 83  
F 281 S 91  
F 281 S 97



The control valve is located in a sheltered place



The strong F 281 S provides new power to loading long logs. The powerful slewing system and the control valve customized for high pressures together with optimal boom structure guarantee that the crane does not cause any loading problems. The control valve and the hoses inside the second boom are protected from impacts. The ergonomic control position makes work smooth and easy.



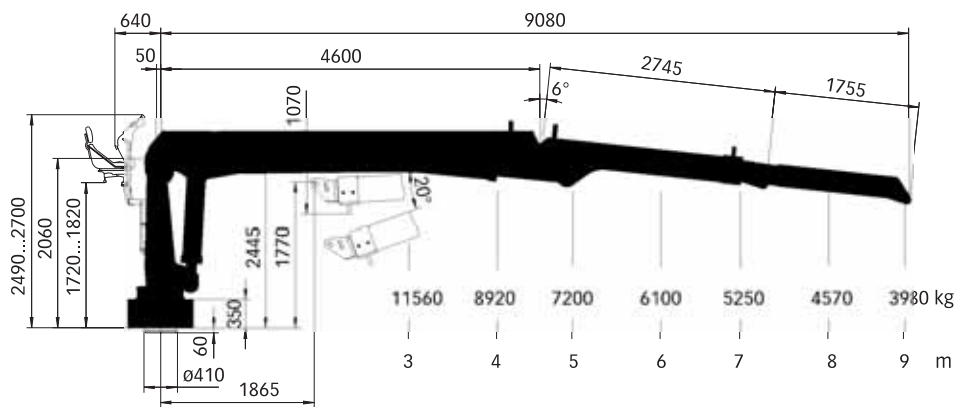
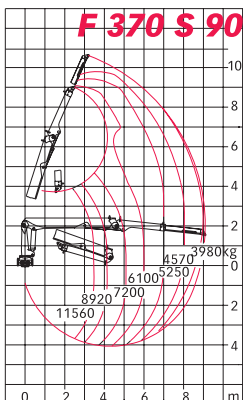
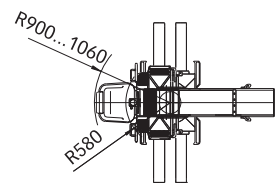
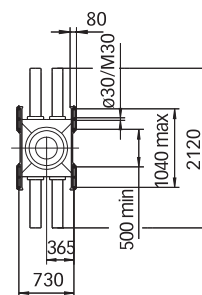
# F 370 S 90



Roller bearings in the base make the crane mobile



The LOGLIFT 370 S was designed for handling very heavy and long logs. Because heavy work requires more from the crane, too, special solutions have been used in the F 370 S in order to guarantee smooth work. For example, a roller bearing has been used also at the top of the base. This guarantees mobile slewing even with heavy loads. Also the other components have been dimensioned taking the highest possible stress into account.



	Lifting moment	Outreach	Stroke of boom extension, hydraulic	Slewing torque	Slewing angle	Loader height	Road width, without stabilizers	Road width, with stabilizers	Weight without stabilizers, oil and grapple	Weight of stabilizers ET 450	Weight of stabilizers SY 550	Working pressure	Oil flow Fixed displacement pump	Power input
Models	net	gross			Pump recommendation									
	kNm	mm	mm	kNm	degrees°	mm	mm	mm	kg	kg	kg	MPa	l/min	kW
<b>F 251 S 79 C</b>	229	7890	1650	42	415	2590	1940	2480/ 2500	2020	450	550	26	80/2x80	37/74
<b>F 251 S 80 A</b>	235	8000	1700	42	415	2590	1940	2480/ 2485	1940	450	550	26	80/2x80	37/74
<b>F 281 S 83</b>	265	8250	1650	48	415	2590	1990	2480/ 2500	2380	450	550	28	2x90	2x45
<b>F 281 S 91</b>	258	9050	1650	48	415	2590	1990	2480/ 2500	2440	450	550	28	2x90	2x45
<b>F 281 S 97</b>	253	9650	1650	48	415	2590	1990	2480/ 2500	2500	450	550	28	2x90	2x45
<b>F 370 S</b>	361	9080	1755	47,1	390	2060	2120		3400			27	2x80-100	80-100

We reserve the right to make changes. Illustrations, drawings and data are not always in accordance with the latest version or standard model in production. The models in the pictures may present special equipment or colours.



# Loglift Equipment

■ standard    □ extra    □ optional

		F 251 S	F 281 S	F 370 S
Mounting position				
Behind the cab	A	■	■	■
Control system				
2-lever		□	□	□
4-lever		□	□	□
5-lever		□	□	□
Hydraulic system, one-pump-drive, fixed displacement pump		□		□
Hydraulic system, two-pump-drive, fixed displacement pump		□	□	□
LS-hydraulic system	mechanic	■		
Pressure booster		■	■	
Manual control of stabilizers from the ground		■	■	
Mechanical control of stabilizers from the control position		■	■	
Electric control of stabilizers from the control position		■	■	
Stabilizer extension piece		■	■	
Separate stabilizers	ET 450	□	□	
	SY 550	□		
CE additional safety system				
Stop button	C0	■	■	
Engine stop	C1	■	■	
With magnetic valves	C2	■	■	
Tilting indicator, magnetic valves	C3	■	■	
High seat		■	■	■
Column hoses fitted with swivel joint		■	■	■
Adjustable seat height		■	■	■
Seat with heating		■	■	■
Weather guard		■	■	■
Side mounted control seat				
	on the right	■		
	on the left	■		
Cabin				
Mechanical control	MF	■		
Spotlights		■	■	
First boom cylinder protection		■	■	
Second boom cylinder protection		■	■	
Preparedness for grapple saw *)		■		
Log heel		■	■	■
Crane damper for lifting and slewing		■	■	
Standard colours				
green		□	□	□
red		□	□	□
black		□	□	□
RAL special colours		■	■	■
<b>Grapples</b>				
FX 42		■		
TX 56 B		■	■	■
TX 86 B		■	■	■
*) Not with LS system				



**Loglift Jonsered Oy Ab**  
P.O. Box 54, Tehdaskatu 7,  
FI-24101 Salo, Finland  
Tel. +358 (0) 204 55 2599  
Fax +358 (0) 204 55 2500  
[www.hiab.com](http://www.hiab.com)