

Hiab Loglift Z-model Cranes



Product brochure



Unnoticeable while driving, irreplaceable while loading

When large amounts of timber need to be transported, there is no sense in wasting valuable cargo space for a crane. The Hiab Loglift Z-model series are timber cranes that fold down into a compact size and possess features that enable pleasant and efficient work. The extensive Z Series features cranes of a suitable size for any truck and any need.

Like all Hiab Loglift cranes, the design of the Z-model series focuses on controllability and ease. The cranes' controls are quick and accurate, and the ergonomic control position provides excellent visibility over the entire work

area. The cabin, available as an optional accessory, further increases work comfort.

Built for work

Hiab Loglift Z-model series cranes are structurally advanced. Made of top-quality materials pieced together in an ingenious design, Hiab Loglift's Z-model series provide lightweight and compact cranes without compromising durability. The power-to-weight ratio of the Z-model series' cranes is top-notch and they can reliably handle load after load, year after year.

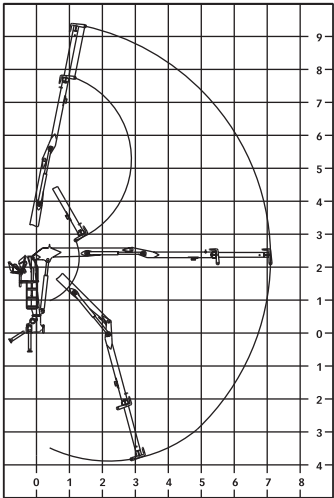
When the Hiab Loglift cranes were designed, special attention was focused on making working and operation functions reliable and easy. For example, some of the cranes feature hydraulic hoses located inside the second boom, a feature that reduces the risk of damage, but still allows room for easy maintenance. The auxiliary cylinder and Power Link solutions developed by Hiab Loglift make load handling easier, and the four-point support on the base reduces the stress on the truck's chassis.

Hiab Loglift 61Z

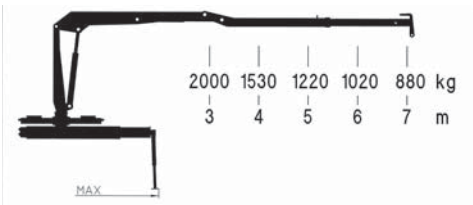


The smallest member of Hiab Loglift’s Z family of cranes is the F61Z. Despite its compact size, the Hiab Loglift 61Z is a full-blooded workhorse, with a reach of over seven metres. The nimble and accurate F61Z lifts and loads timber with the same precision as its bigger brothers – quickly and efficiently.

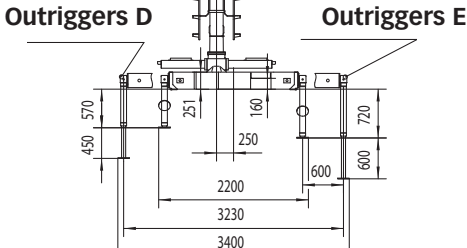
F61Z



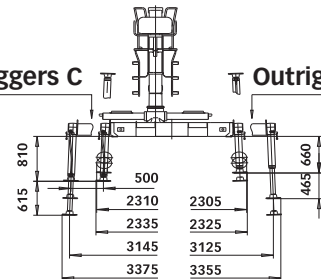
F61Z



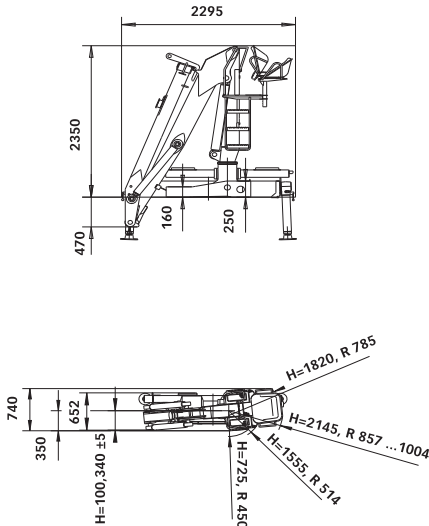
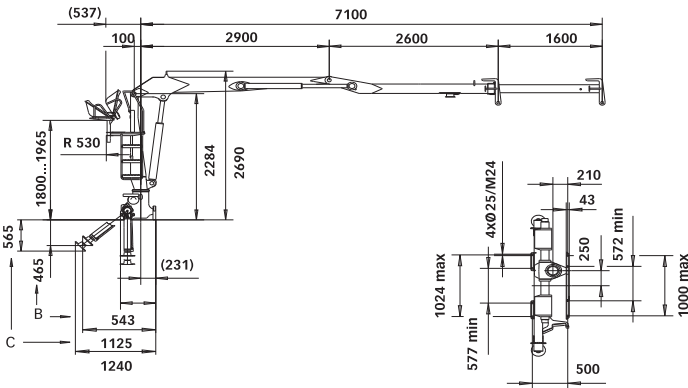
F61Z



Outriggers C Outriggers B



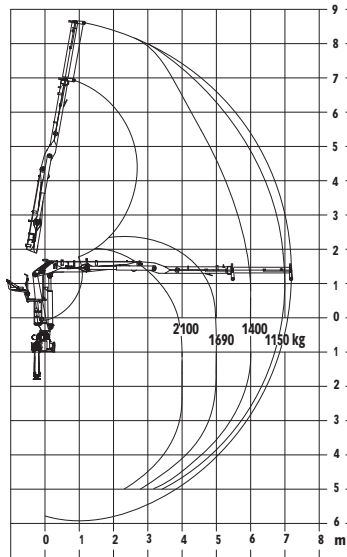
F61Z



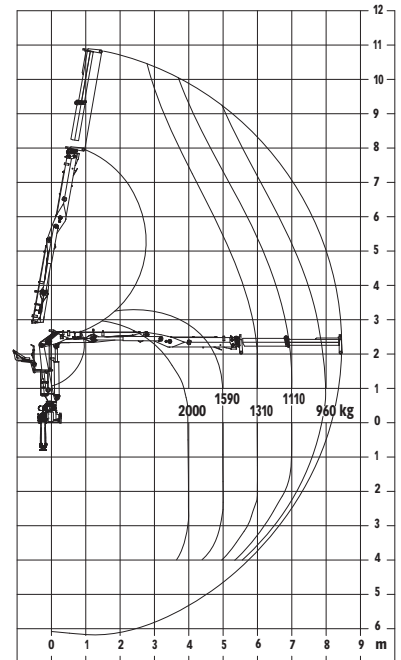
Hiab Loglift 82Z



F82Z72

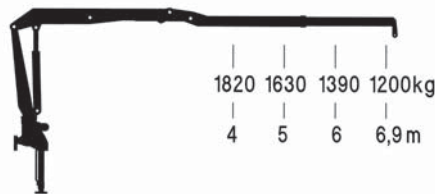


F82ZT84

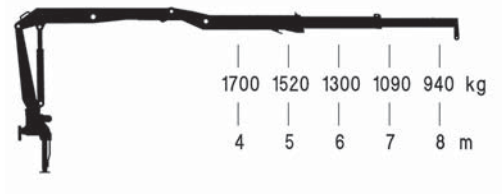


The Hiab Loglift 82Z is designed for light trucks. This powerful crane has a long reach, and its ergonomics match that of large cranes. If necessary, it can also be equipped with a telescopic boom. When you need a crane that conserves cargo space and loads cut-to-length timber quickly and accurately, the F82Z is in a class of its own.

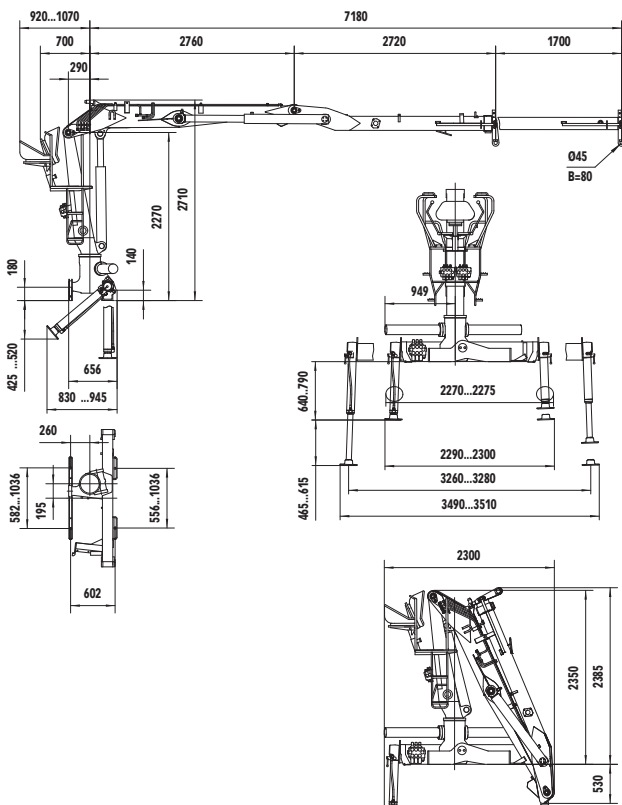
F82Z72



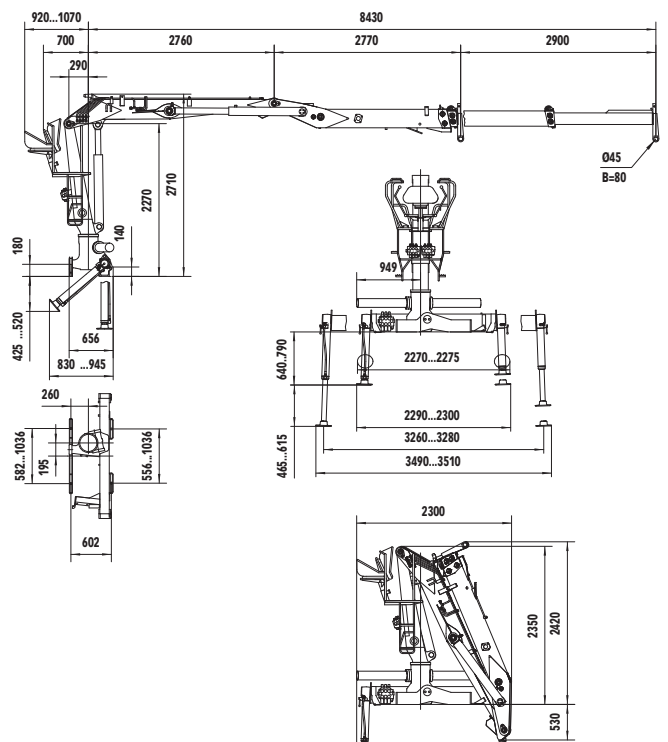
F82ZT84



F82Z72



F82ZT84

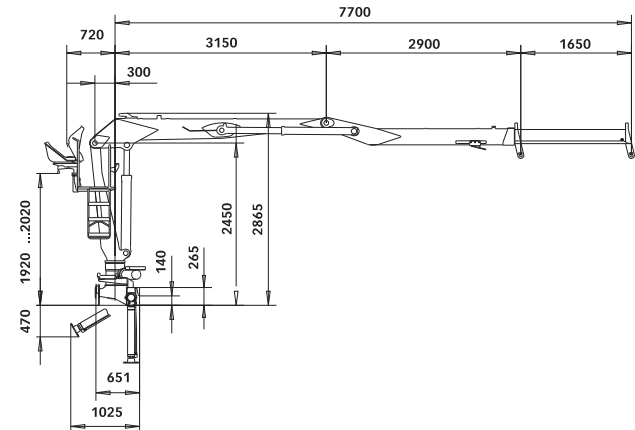


Hiab Loglift 105Z

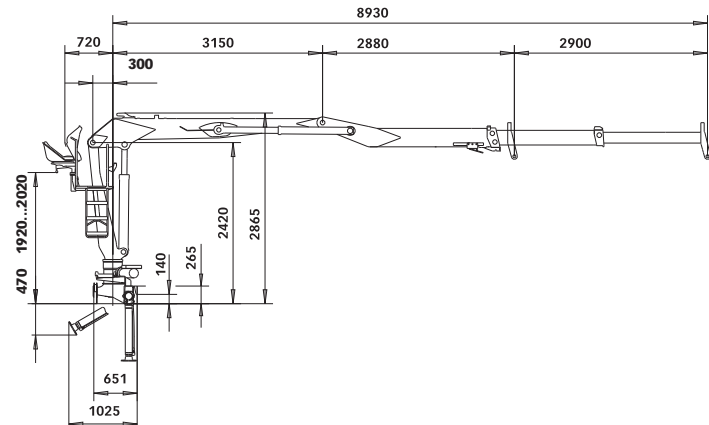


The most popular crane of the Hiab Loglift Z-model series did not gain its fame by accident. The F105Z has versions with different reaches and is therefore suited for both small and large timber trucks. Its responsive and accurate controls, combined with sufficient reach, guarantee smooth loading. This foldable and lightweight crane wastes neither cargo space nor carrying capacity.

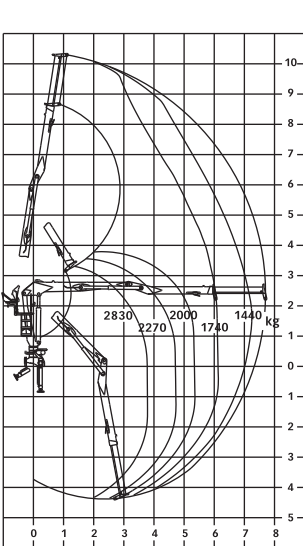
F105Z75/77



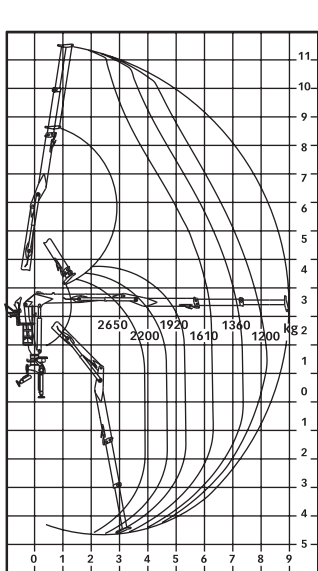
F105ZT87/89



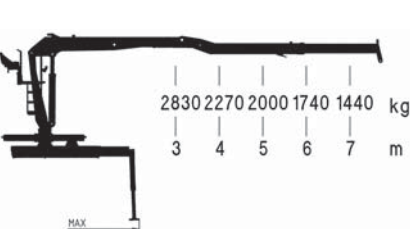
F105Z75/77



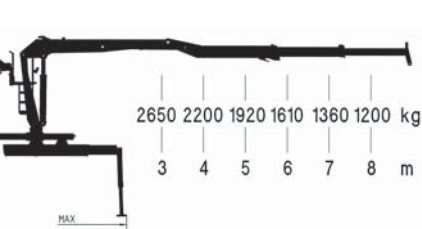
F105ZT87/89



F105Z75/77

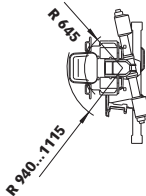
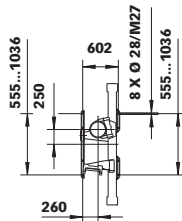
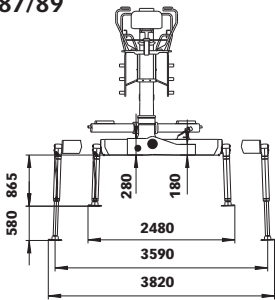


F105ZT87/89



F105Z75/77

F105ZT87/89

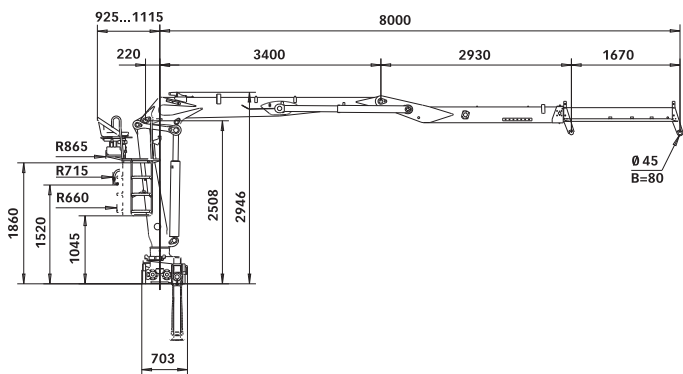


Hiab Loglift 115Z

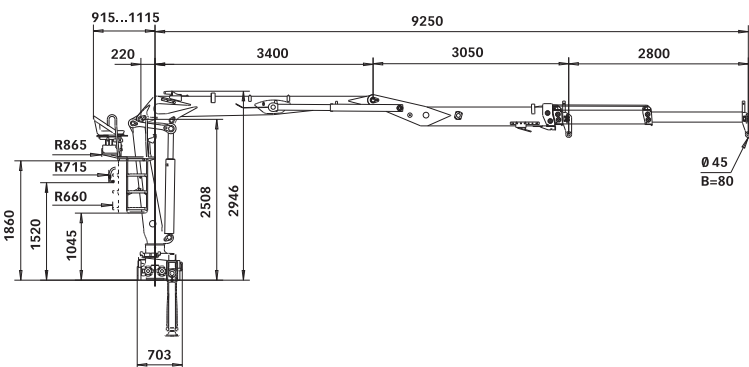


The Hiab Loglift 115Z, intended for loading cut-to-length timber, was designed for continuous and hard work. The cast steel base and box-type structures guarantee its durability, while the double slew and Power Link guarantee its high and durable performance. For additional protection, the hoses are protected inside the second boom in both the single and double telescoping boom version. Accurate controllability and an ergonomic control position make loading smooth and easy.

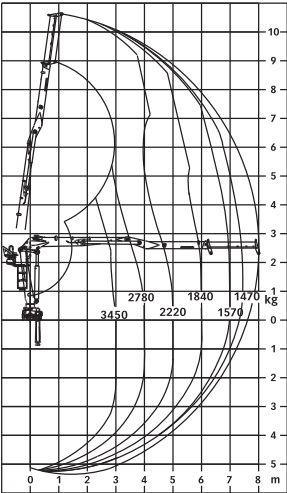
F115Z78/80



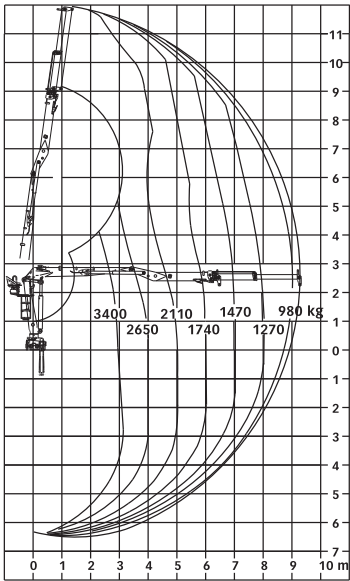
F115ZT90/93



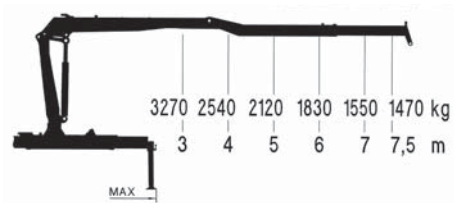
F115Z78/80



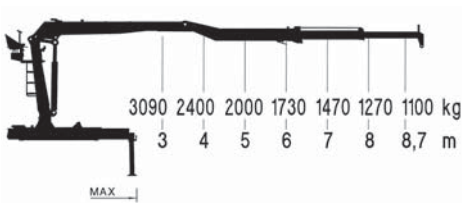
F115ZT90/93



F115Z78/80

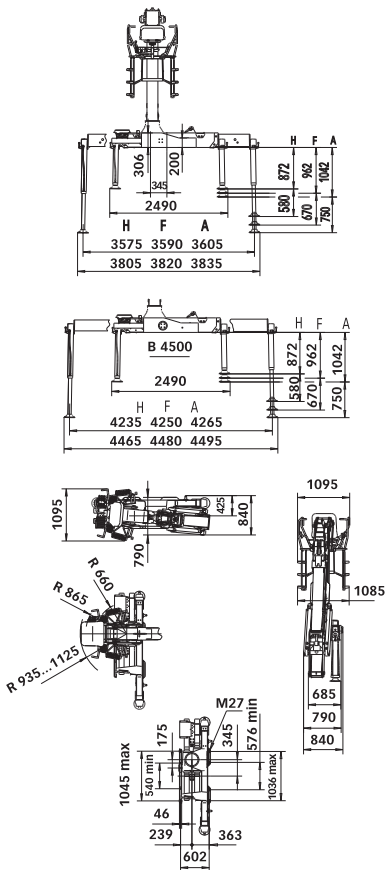


F115ZT90/93



F115Z78/80

F115ZT90/93



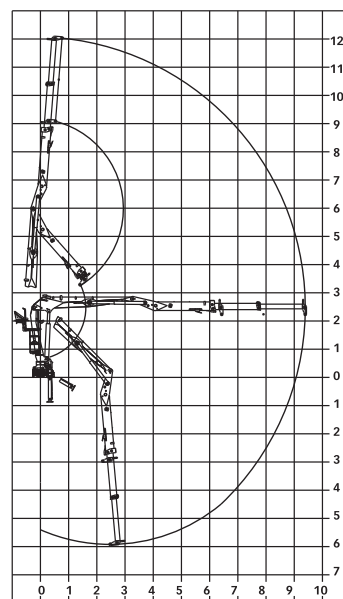
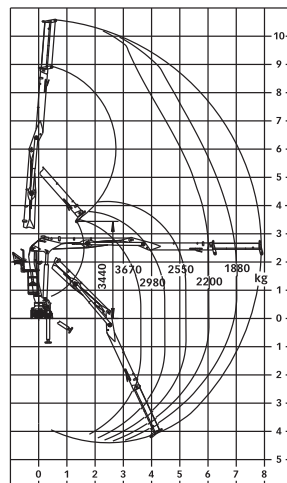
Hiab Loglift 135Z



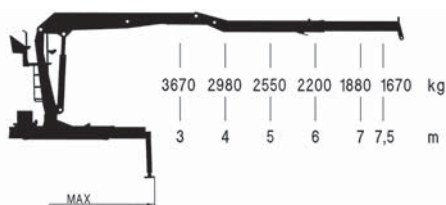
Light-for-its-size, the Hiab Loglift 135Z loads even the largest of loads, effortlessly and smoothly. The use of an auxiliary cylinder guarantees optimal boom-system geometry and performance, even at a very close range. It also enables excellent driving ergonomics and an unrestricted view over the entire loading area. In the telescopic model, the hydraulic hoses are located either inside the second boom or outside it on both sides.

F135ZT94

F135Z79



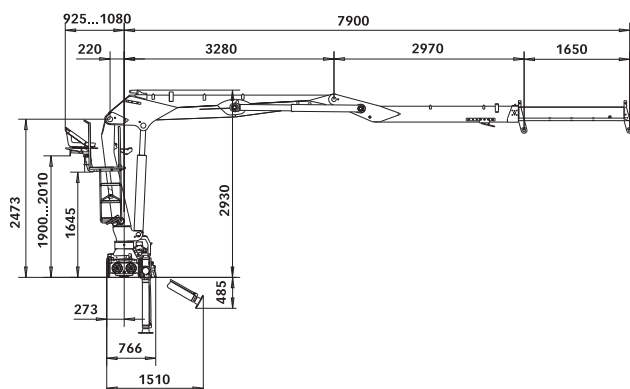
F135Z79



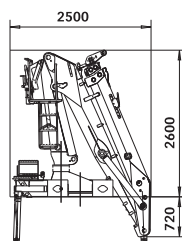
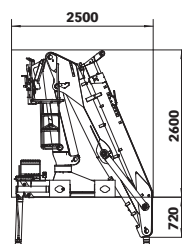
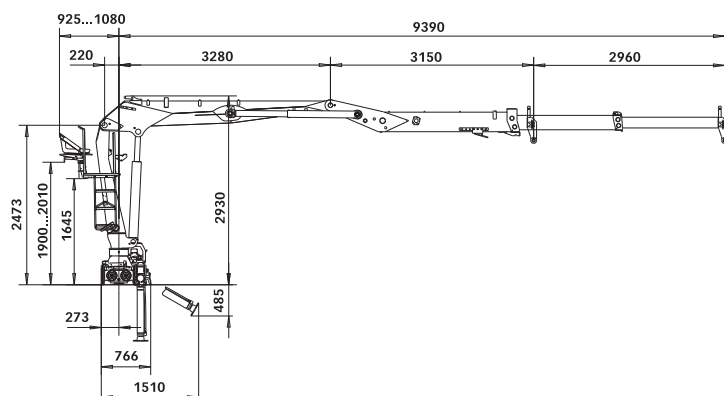
F135ZT94



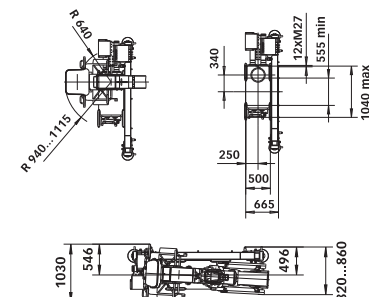
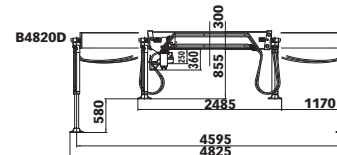
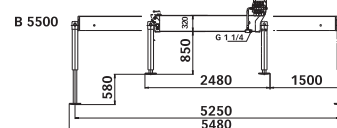
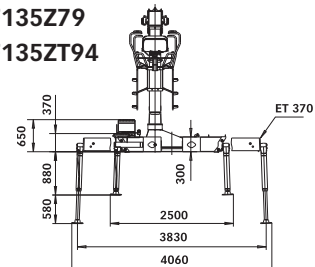
F135Z79



F135ZT94



F135Z79
F135ZT94



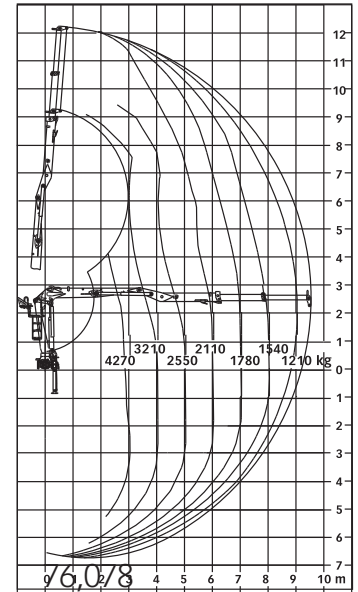
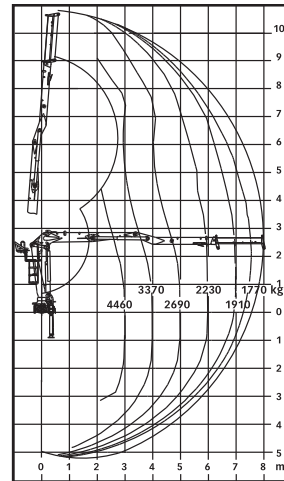
Hiab Loglift 145Z



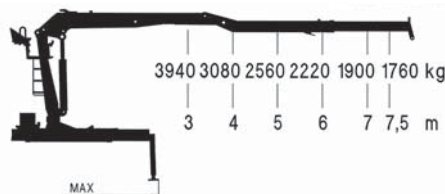
The Power Link allows the sturdy Hiab Loglift 145Z to lift heavy and long timber, just like a larger crane. A wide range of stabiliser and control alternatives are available for the crane. As is the case with all Hiab Loglift cranes, the four-point support system remains stable and does not stress the truck's chassis.

F145ZT95

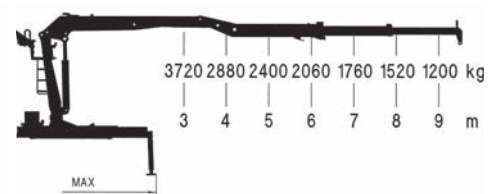
F145Z80



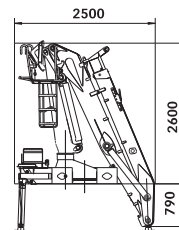
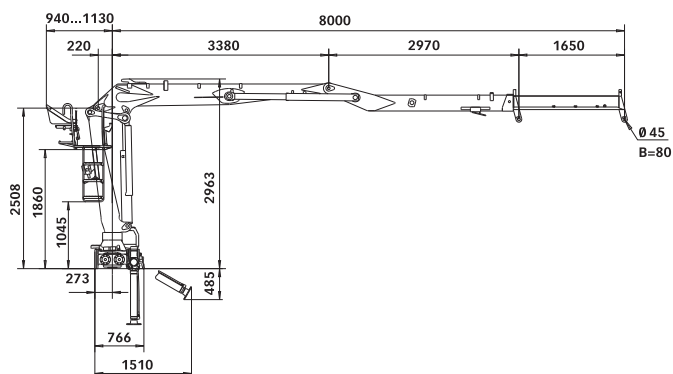
F145Z80



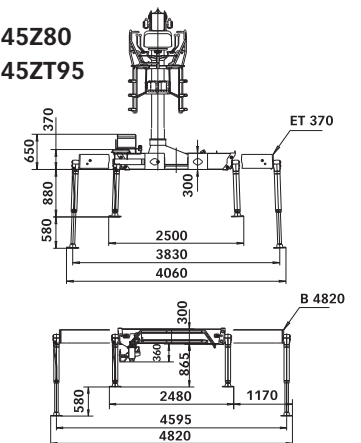
F145ZT95



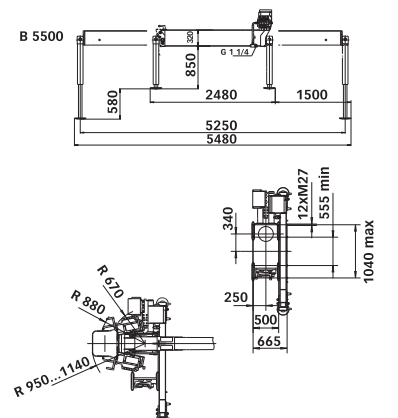
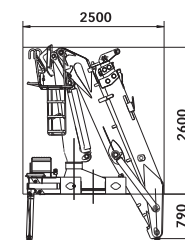
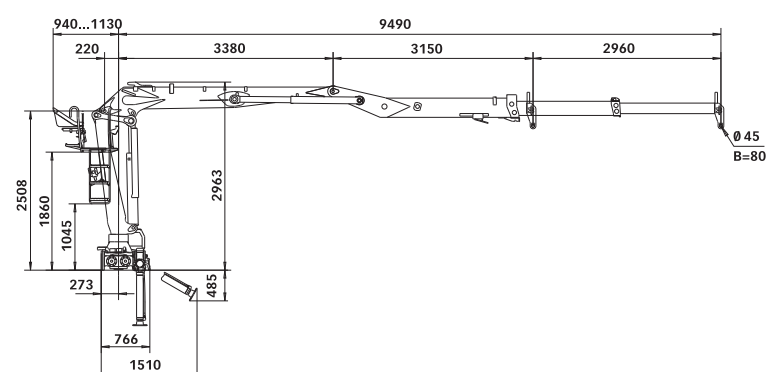
F145Z80



**F145Z80
F145ZT95**



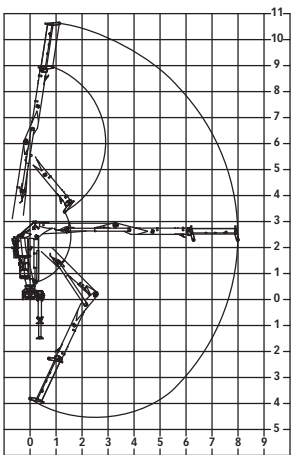
F145ZT95



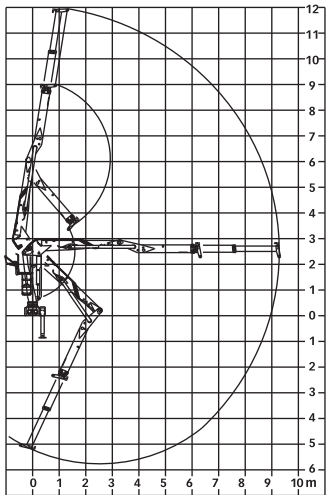
Hiab Loglift 165Z



F165Z80

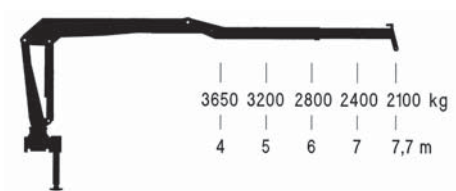


F165ZT93

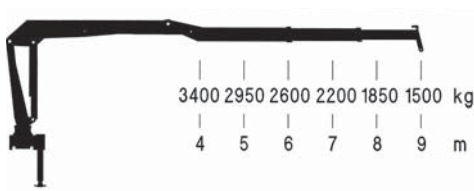


The Hiab Loglift 165Z is a long-time favourite of the Z-model series. Its trump feature is its clear and easy-to-maintain structure that has been proven in the field. The narrow first boom allows excellent visibility over the entire loading area. Also, as there are only a few wearing parts, the crane endures and retains its value over time. The F165Z is suited for loading both long and short timber.

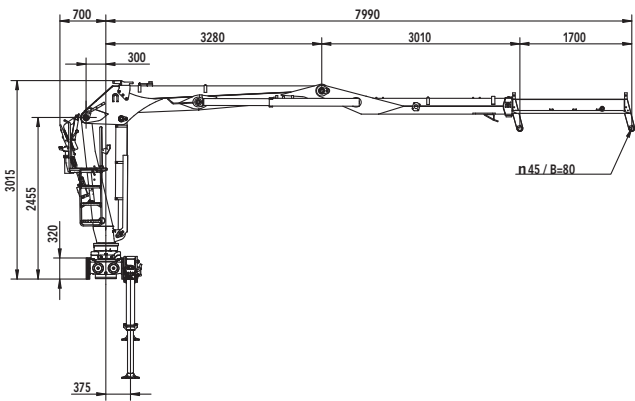
F165Z80



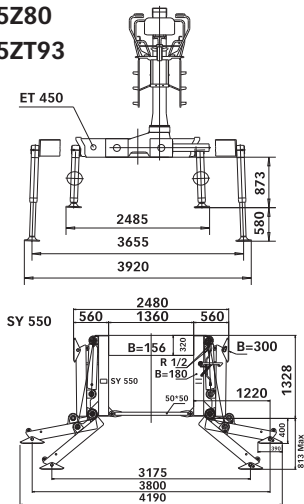
F165ZT93



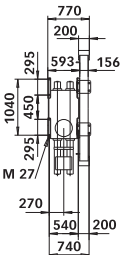
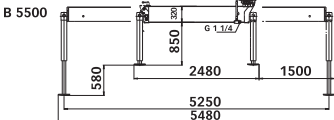
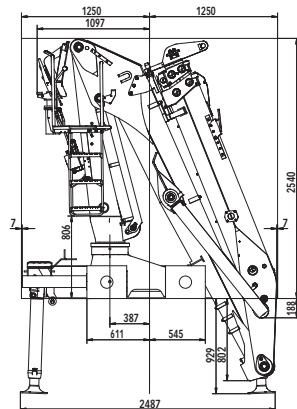
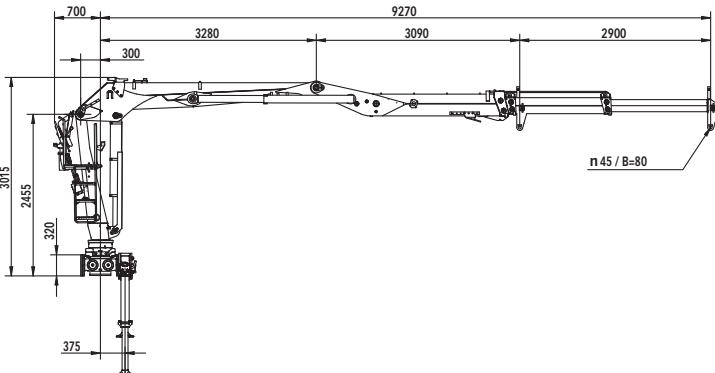
F165Z80



F165Z80
F165ZT93



F165ZT93

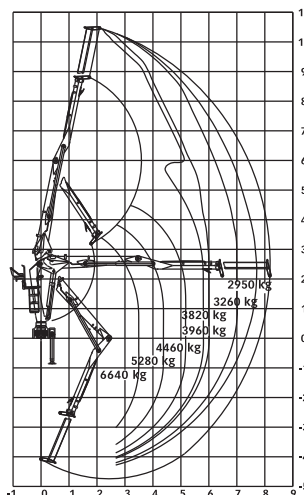


Hiab Loglift 265Z

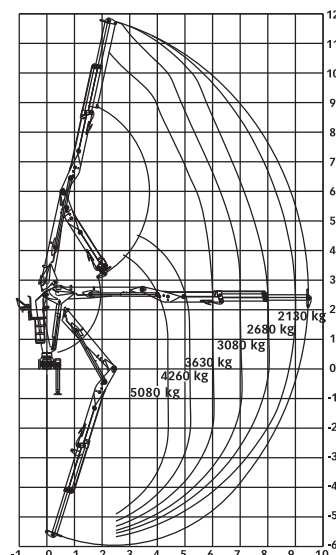


The Hiab Loglift 265Z is the flagship of the Z-model series, featuring previously unseen lifting capacity and reach in its class. Due to the ingenious design of the long auxiliary cylinder, the performance of the light and compact F265Z is superior compared to other cranes in its class. The F265Z is a good alternative to tree-length cranes with a straight boom, as it does not limit the truck's cab-height or take up valuable cargo space from the timber.

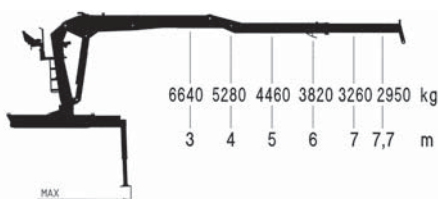
F265Z82



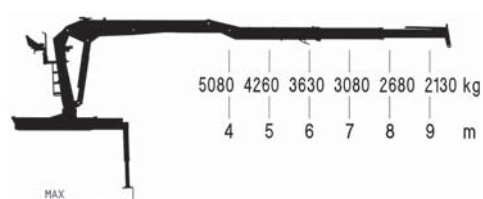
F265ZT95



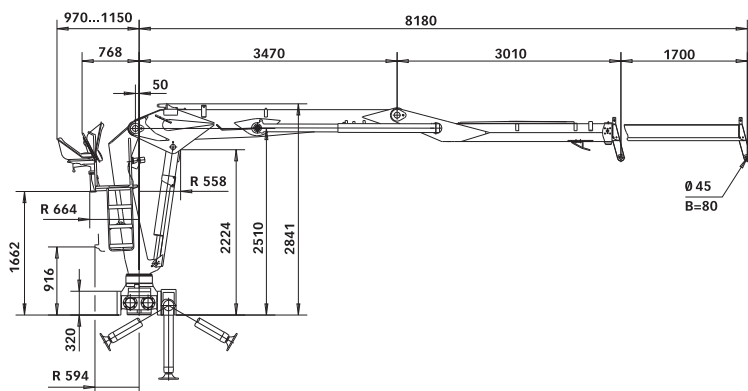
F265Z82



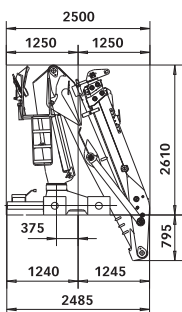
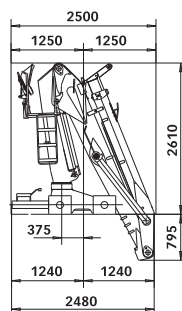
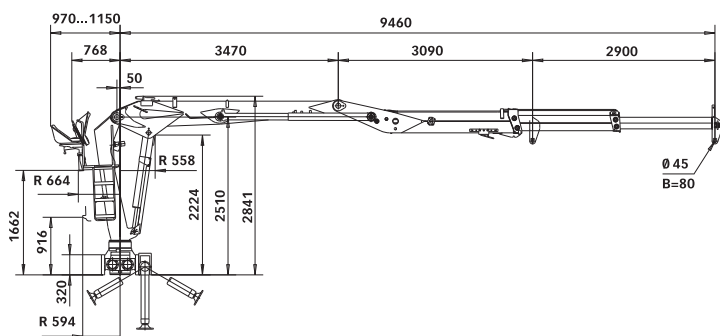
F265ZT95



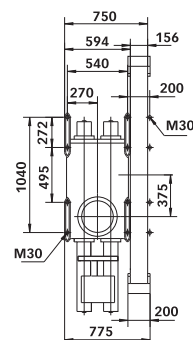
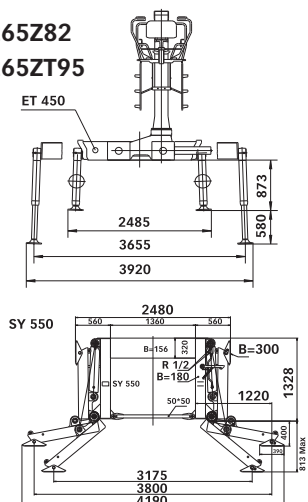
F265Z82



F265ZT95



F265Z82
F265ZT95



Hiab Loglift Specification

Models	Lifting moment		Outreach	Stroke of boom extension, hydraulic	Slewing torque	Slewing angle	Loader height: bottom -> to upper joint in pillar	Road width	Road height	Weight with outriggers, without oil and grapple	Weight without outriggers, without oil and grapple	Working pressure	Pump recommendation	
	Gross kNm	Net kNm											L/min	kW
F61Z	77	60	7100	1600	14	415	2284	2310	2350	1280		22	1x60/2x50-60	23/39-46
F82Z72	105	82	7180	1700	18.2	415	2270	2300	2385	1620		23.5	2x50-60	44-52
F82ZT84	105	76	8430	2900	18.2	415	2270	2300	2420	1760		23.5	2x50-60	44-52
F105Z75	132	102	7500	1650	25	415	2420	2500	2500	1875		23	1x70-90/2x60-80	48-64
F105Z77	132	102	7700	1650	25	415	2420	2500	2500	1890		23	1x70-90/2x60-80	48-64
F105Z87	132	95	8730	2900	25	415	2420	2500	2500	2005		23	1x70-90/2x60-80	48-64
F105ZT89	132	95	8930	2900	25	415	2420	2500	2500	2020		23	1x70-90/2x60-80	48-64
F115Z78	140	110	7780	1670	28	425	2468	2490	2550	2040		24	1x70-90/2x60-80	31-71
F115Z80	140	110	8000	1670	28	425	2508	2500	2600	2050		24	1x70-90/2x60-80	31-71
F115ZT90	140	104	9030	2800	28	425	2468	2490	2550	2160		24	1x70-90/2x60-80	31-71
F115ZT93	140	104	9250	2800	28	425	2508	2500	2600	2170		24	1x70-90/2x60-80	31-71
F135Z79		129	7900	1650	28.6	425	2473	2500	2600	2060		25	1x70-90/2x60-80	31-71
F135ZT94		127	9390	2960	28.6	425	2473	2500	2600	2190		25	1x70-90/2x60-80	31-71
F145Z80		132	8000	1650	29	425	2508	2500	2600		1810	25	1x70-90/2x60-80	31-71
F145ZT95		127	9490	2960	29	425	2508	2500	2600		1975	25	1x70-90/2x60-80	31-71
F165Z80		165	7800	1625	31	412	2450	2470	2540		1830	22	80/2x80	32-64
F165ZT93		152	9270	2900	31	412	2450	2500	2540		2050	22	80/2x80	32-64
F265Z82		225	8180	1700	36.4	370	2510	2480	2610		2180	27	80/2x80	38-76
F265ZT95		214	9460	2960	36.4	370	2510	2480	2610		2350	27	80/2x80	38-76

Hiab Loglift Equipment

● = standard ■ = extra ▼ = optional		F61Z	F82Z	F105Z	F115Z	F135Z	F145Z	F165Z	F265Z
Mounting position									
Behind the cab	A	▼	▼	▼	●	●	●	●	●
At the rear of the truck	R	▼	▼	▼					
Control system	2 levers	●	●	▼	▼	▼	▼	▼	▼
	4 levers			▼	▼	▼	▼	▼	▼
	5 levers				▼	▼	▼	▼	▼
Hydraulic system, one-pump-drive, fixed displacement pump		●		●	▼	▼	▼		
Hydraulic system, two-pump-drive, fixed displacement pump		■	●	■	■	▼	●	●	●
LS-hydraulic system									
Mechanic					■	■			
Automatic lifting of stabilizers into transport position			■	■	■				
Manual control of stabilizers from the ground		●	●	●	■	●	●	●	●
Mechanical control of stabilizers from the control position		■	■	▼	●	■	■	■	■
Electric control of stabilizers from the control position				▼	■	■	■	■	■
Stabilizer lifting angle 180 degrees	Powerlift				■	■	■	■	■
Stabilizer length alternatives (pcs)		4	2	1	3	1	1	1	1
Stabilizer extension piece		■	■	■	■	■	■	■	■
Extra wide stabilizers	B4500				■				
Separate stabilizers (weight)	ET370 (395 kg)					■	■		
	ET450 (450 kg)							■	■
	SY550 (550 kg)							■	■
Extra wide stabilizers, separate (weight)	B4820 (480 kg)					■	■		
	B5500 (620 kg)					■	■	■	
CE additional safety system									
Engine stop	C1	■	■	■	■	■	■	■	■
with magnetic valves	C2			■	■	■	■	■	■
tilting indicator, magnetic valves	C3					■	■	■	■
Magnetic valves, tilting indicator, 1st boom	C4				■				
Engine stop, tilting indicator	C5				■				
POL (Prevent Over Load)				■		■	■	■	
Column hoses fitted with swivel joint		●	●	●	●	●	●	●	●
Adjustable seat height		●	●	●	●	●	●	●	●
Seat with heating		■	■	■	■	■	■	■	■
Weather guard				■	■	■	■	■	■
Cabin									
Mechanical control	MF				■	■			
Spotlights				■	■	■	■	■	■
First boom cylinder protection		■		■	■	■	■	■	■
Preparedness for grapple saw				■		■	■		
Log heel				■	■	■	■	■	■
Pressure Booster									■
Standard colours	green	▼	▼	▼	▼	▼	▼	▼	▼
	red	▼	▼	▼	▼	▼	▼	▼	▼
	black	▼	▼	▼	▼	▼	▼	▼	▼
RAL special colours		■	■	■	■	■	■	■	■
Grapples									
FX26		■							
FX36		■	■						
X43			■	■	■	■	■	■	
X53				■	■	■	■	■	
TX56B									■

We reserve the right to make changes. Illustrations, drawings and data are not always in accordance with the latest version or standard model in production. The models in the pictures may present special equipment or colours.

***Cargotec** improves the efficiency of cargo flows on land and at sea - wherever cargo is on the move. Cargotec's daughter brands, Hiab, Kalmar and MacGregor are recognised leaders in cargo and load handling solutions around the world. Cargotec's global network is positioned close to customers and offers extensive services that ensure the continuous, reliable and sustainable performance of equipment. www.cargotec.com*



www.cargotec.com
www.hiab.com