

Hiab Loglift Cut-to-Length Cranes





Professional's choice

For handling cut-to-length timber fast, durable and powerful crane is invaluable, making rapid work of timber movements. Hiab Loglift cranes have a powerful slewing system, good lifting capacity over their entire reach, and intuitive controls that make work swift and accurate. These are the qualities valued by professionals – qualities that lift the Hiab Loglift's range above others.

Hiab Loglift's extensive product range features durable cranes for any truck – from small two-axle vehicles to large articulated trucks. The cranes vary in reach from seven meters to over nine and a half meters for the telescoping models. The constant-

pressure hydraulics of the cranes guarantee highly responsive controls and swift work, which places Hiab Loglift in a class of its own in loading.

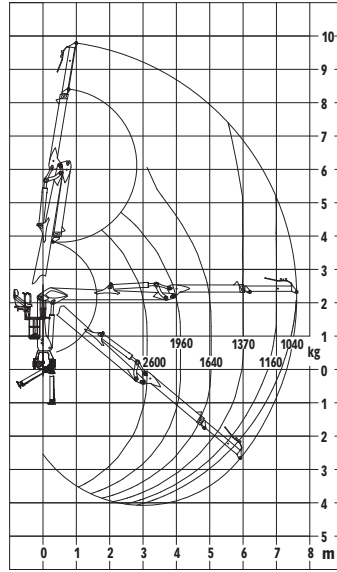
For any truck

As is typical of Hiab Loglift cranes, the S model range features an ergonomic control position, offering an unrestricted view over the entire working area. For a little luxury in your life, you may install a cabin for the crane, making work easy and comfortable in rainy or freezing weather. In addition to a cabin, everyone may choose the equipment necessary for each crane from Hiab Loglift's extensive selection of optional equipment.

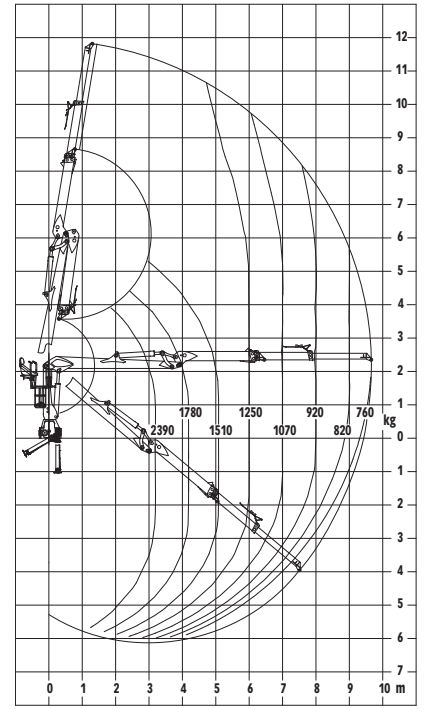
Hiab Loglift 82S



F82S

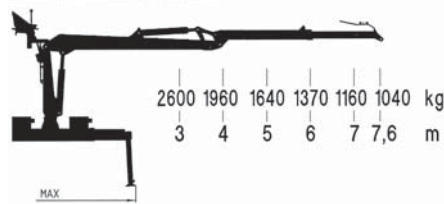


F82ST

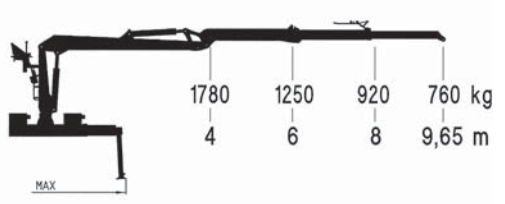


The Hiab Loglift 82S and 82ST are reliable basic cranes. They are swift in their movements and have a greater lifting capacity than the lighter model.

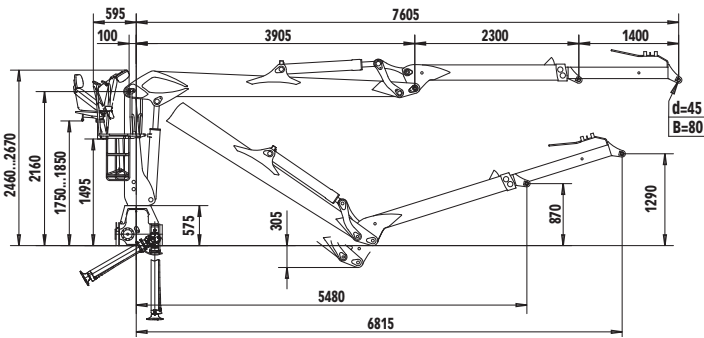
F82S



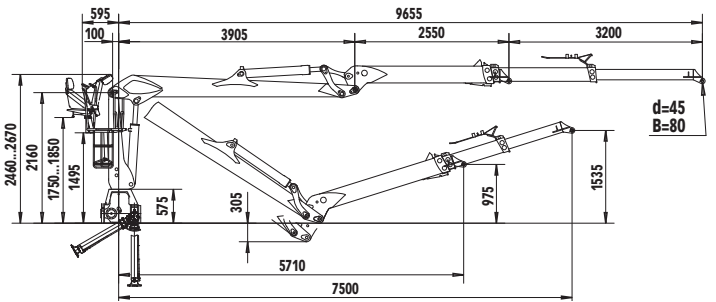
F82ST



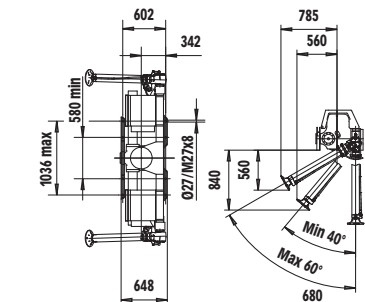
F82S



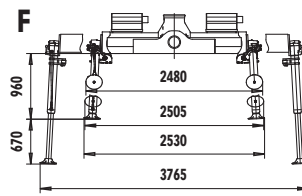
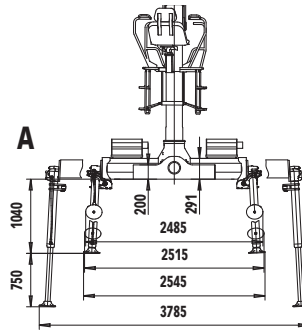
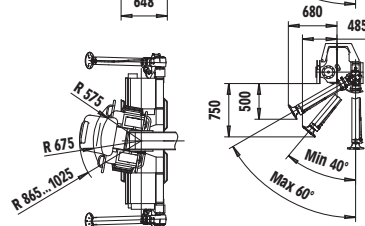
F82ST



STABILIZERS A



STABILIZERS F

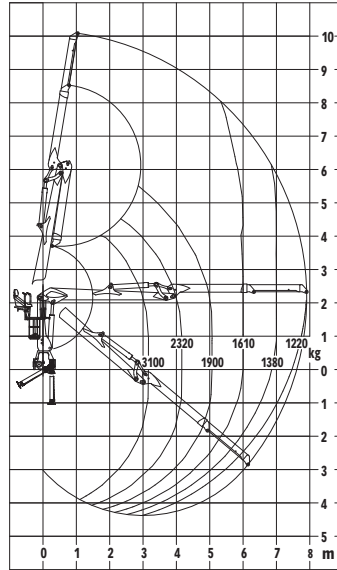


Hiab Loglift 96S

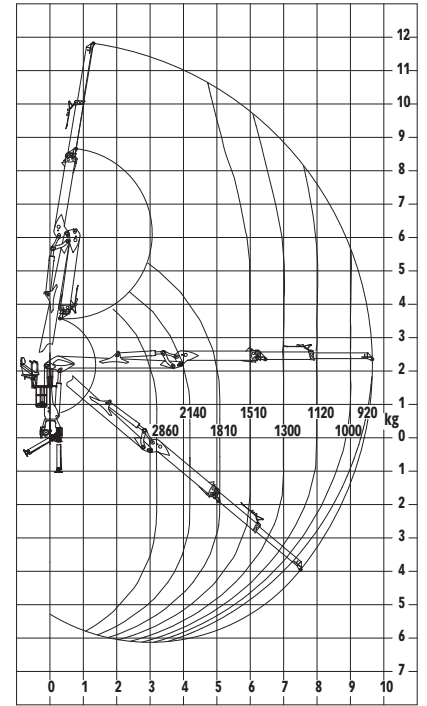


The Hiab Loglift 96S is the most popular cut-to-length crane on the market – and not without reason: it combines power, speed, and efficiency in just the right proportions. The telescoping model, F96ST, can effortlessly reach the pile from further away and load the timber all the way to the back of the trailer.

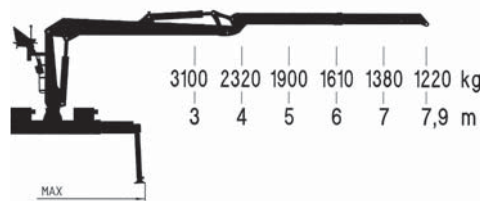
F96S



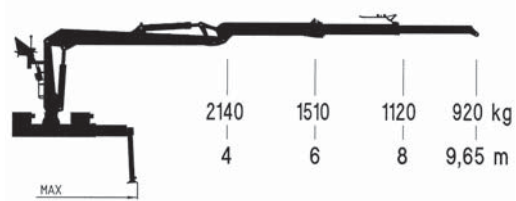
F96ST



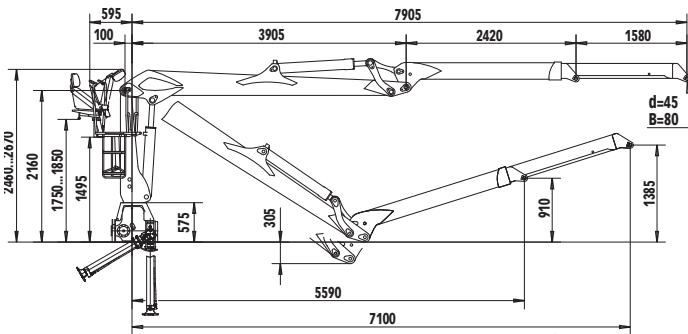
F96S



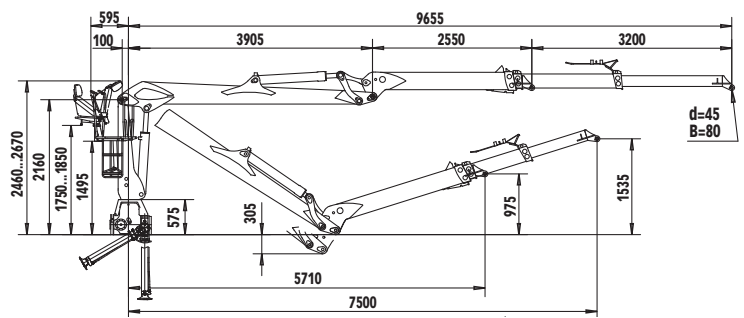
F96ST



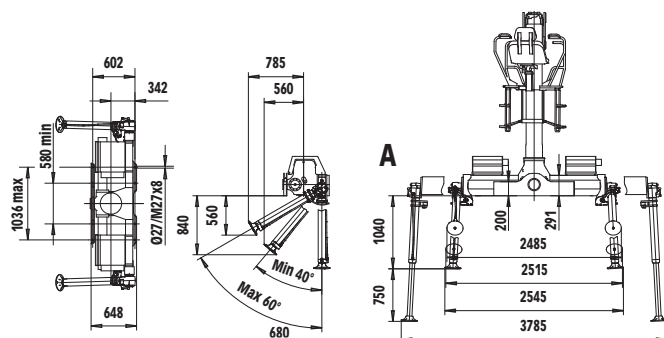
F96S



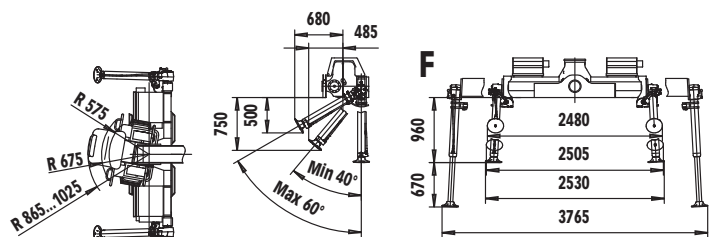
F96ST



STABILIZERS A



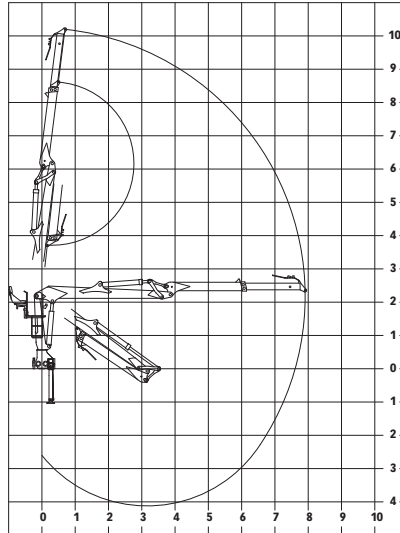
STABILIZERS F



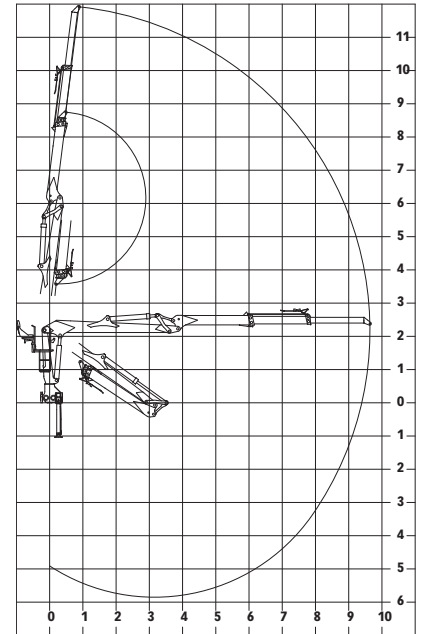
Hiab Loglift 120S



F120S

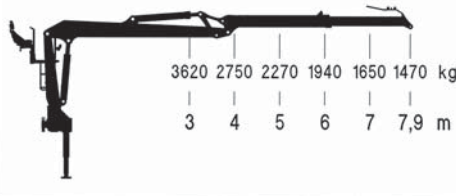


F120ST

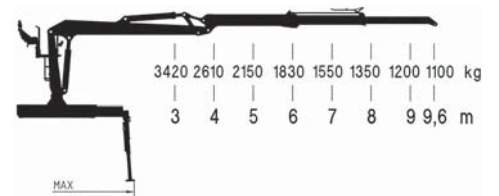


The Hiab Loglift 120S and 120ST, featuring a powerful double-slewing system, are the right choice when you have to load a lot of timber and the crane is under constant stress. These durable cranes have the power to handle larger loads as well, when necessary.

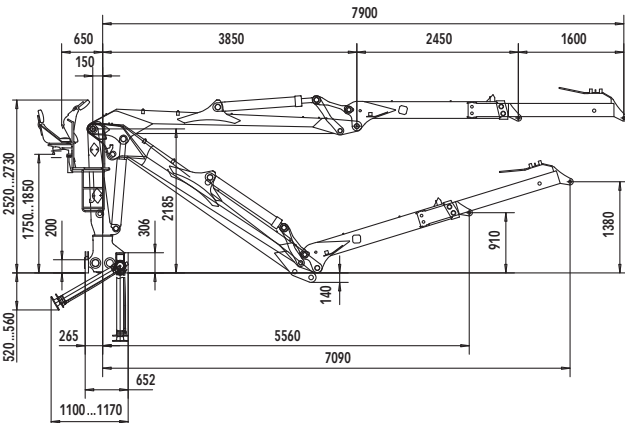
F120S



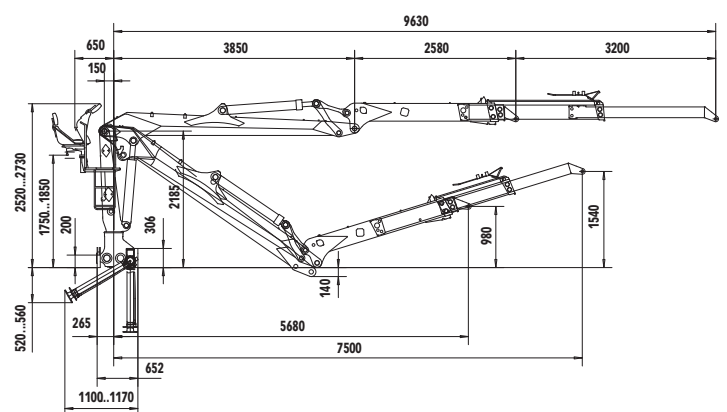
F120ST



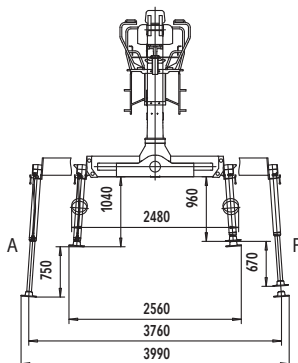
F120S



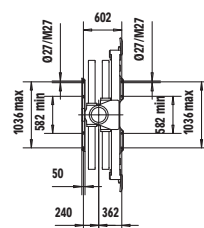
F120ST



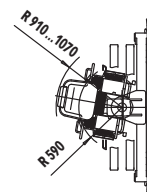
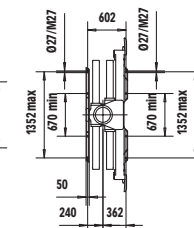
STABILIZERS A and F



STANDARD



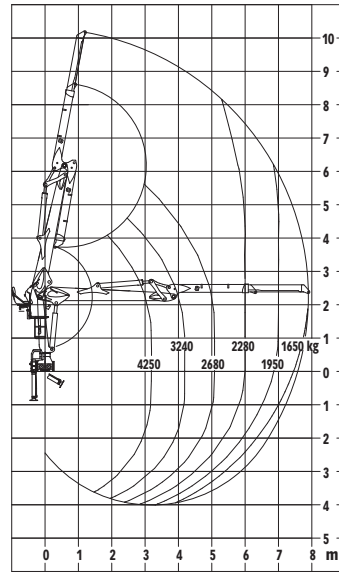
BROAD FASTENING



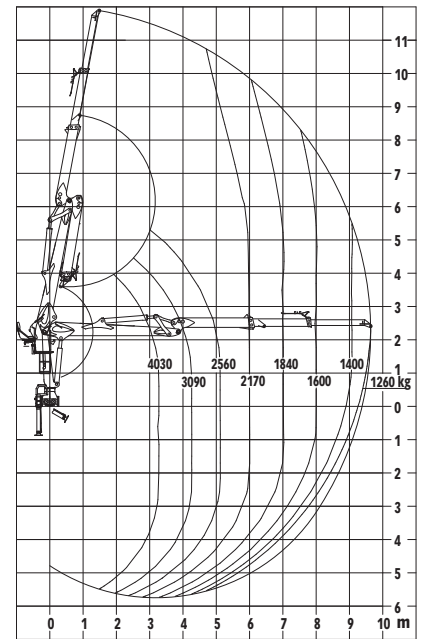
Hiab Loglift 140S



F140S

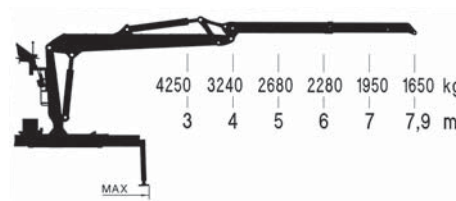


F140ST



The Hiab Loglift 140S and 140ST are designed for loading heavy cut-to-length and light full-length trunks. These cranes have the power for reliable loading day in, day out, year after year. The separate stabilizer leg framework allows the use of wider stabilizer legs and several installation options.

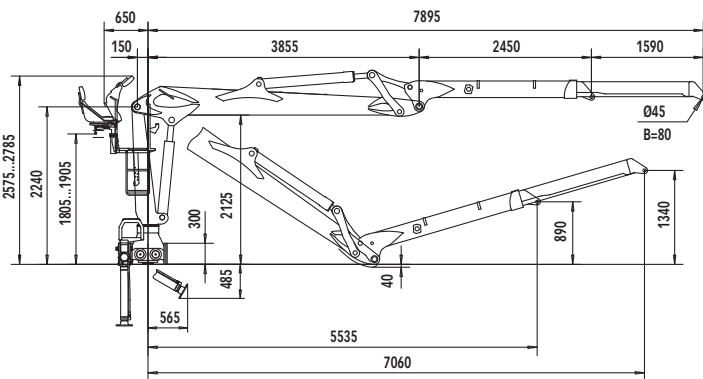
F140S



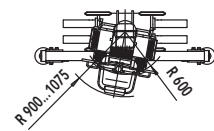
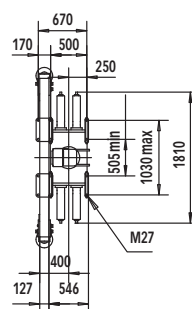
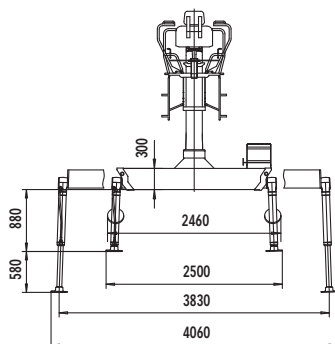
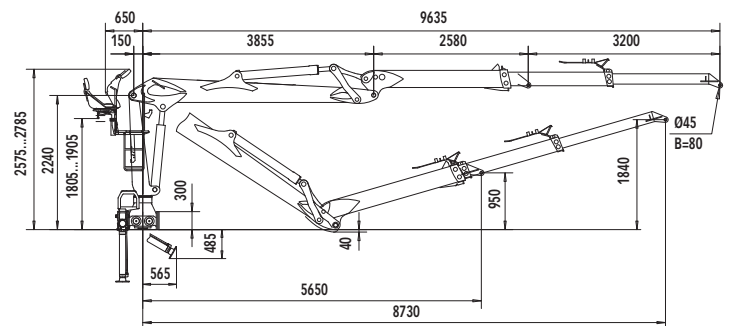
F140ST



F140S



F140ST



Hiab Loglift Equipment

● = standard ■ = extra ▼ = optional

	F82S	F96S	F120S	F140S
Mounting position				
Behind the cab	▼	▼	▼	▼
At the rear of the truck	R	▼	▼	▼
Control system	2-levers	▼	▼	▼
	4-levers	▼	▼	▼
	5-levers	▼	▼	▼
Hydraulic system, one-pump-drive, fixed displacement pump	●	●	●	●
Hydraulic system, two-pump-drive, fixed displacement pump	■	■	■	■
LS-hydraulic system				
Mechanic		■	■	■
Electric		■	■	■
Automatic lifting of stabilizers into transport position		■	■	■
Manual control of stabilizers from the ground	●	●	●	●
Mechanical control of stabilizers from the control position	■	■	■	■
Electric control of stabilizers from the control position	■	■	■	■
Stabilizer lifting angle 180 degrees		■	■	■
Stabilizer length alternatives (pcs)	2	2	2	1
Separate stabilizers	ET370			■
Extra wide stabilizers, separate	B4820			■
Extra wide stabilizers	B4600			■
Stop button	■	■	■	■
CE additional safety system				
engine stop	C1	■	■	■
with magnetic valves	C2	■	■	■
tilting indicator, magnetic valves	C3	■	■	■
magnetic valves, tilting indicator, 1st boom	C4	■	■	■
engine stop, tilting indicator	C5	■	■	■
motor stopper, cabin model, PV90 E	C6	■	■	■
POL (Prevent Over Load)		■	■	■
Column hoses fitted with swivel joint	●	●	●	●
Adjustable seat height	●	●	●	●
Seat with heating	■	■	■	■
Weather guard	■	■	■	■
Cabin				
Mechanical control	MF	■	●	●
Electrical control	E	■	■	■
Hoses inside the second boom, 1 extension		▼	▼	●
Hoses inside the second boom, 2 extensions	▼	▼	▼	▼
Hoses outside the second boom, 1 extension	●	▼	▼	▼
Spotlights	■	■	■	■
Scale (with cabin only)	■	■	■	■
First boom cylinder protection	■	■	■	■
Lubricating device				
(Automatic centralised lubrication)	■	■	■	■
Preparedness for grapple saw	■	■	■	■
Log heel				
Pressure Booster		■	■	■
Standard colours	green	▼	▼	▼
	red	▼	▼	▼
	black	▼	▼	▼
RAL special colours	■	■	■	■

Hiab Loglift Technical Data

Models	F82S	F82ST	F96S	F96ST	F120S	F120ST	F140S	F140ST
Lifting moment								
gross	104	104	122	122	144	144	166	166
net	81	74	95	89	114	108	134	128
Outreach	7605	9655	7905	9655	7900	9630	7900	9630
Stroke of boom extension, hydr.	mm	3200	1580	3200	1600	3200	1590	3200
Slewing								
torgue								
gross	kNm	19,5	22,8	22,8	27,5	27,5	30	30
Slewing angle	(deg)°	415/424	415/424	415/424	425	425	425	425
Loader height: bottom → to upper joint in pillar	mm	2160	2160	2160	2185	2185	2615	2615
Road width	mm	2490	2490	2490	2490	2490	2490	2490
Weight (without oil and grapple)	kg	1810	1930	1840	1980	2110	1690	1830
Weight of outriggers							395	395
Pump Recommendation								
Working pressure	MPa	20,5	24	24	24	24	26	26
Oil flow	l/min							
Fixed displacement pump	80-90	80-90	80-90	80-90	2x70-80	2x70-80	80-90	80-90
Variable displacement pump	2x70-80	2x70-80	2x70-80	2x70-80	2x70-80	2x70-80	2x70-80	2x70-80
Variable displacement pump	160 min.	160 min.	160 min.	160 min.	160 min.	160 min.	160 min.	160min.
Power Input	kW				36-71	36-71		

Equipment

	X43	X43	X43	X43	X43	X43	X43	X43
	X53	X53	X53	X53	X53	X53	X53	X53
Grapples								
Models	X43	X53						
Holding area	m²	0,4	0,5					
Jaw pressure	kN/MPa	18/23	17/23					
Weight	kg	220	225					

We reserve the right to make changes. Illustrations, drawings and data are not always in accordance with the latest version or standard model in production. The models in the pictures may present special equipment or colours.

Cargotec improves the efficiency of cargo flows on land and at sea - wherever cargo is on the move. Cargotec's daughter brands, Hiab, Kalmar and MacGregor are recognised leaders in cargo and load handling solutions around the world. Cargotec's global network is positioned close to customers and offers extensive services that ensure the continuous, reliable and sustainable performance of equipment. www.cargotec.com



www.cargotec.com
www.hiab.com