

# Hiab Jonsered 1080







The clear display for the electrical control helps in programming and checking user-specific standard values and commands.



Digital control is accurate and light to use. Thanks to digital control, individual personal adjustments can easily be stored in the control unit memory.



The J 1080 can be equipped with a scale, in order to utilise the full, legal carrying capacity of a truck.



## A tough tool for hard work!

The Hiab Jonsered 1080 is designed as a power tool for constantly loading. Our top model offers light digital control levers, for example, that take the strain off even a major loading job.

Nowadays, an increasing number of Hiab Jonsered cranes are purchased equipped with a cabin. In severe conditions, the cabin significantly improves comfort and safety at work and, with its modern design, it is spacious and provides a good view in all directions. Halogen or xenon lights illuminate the operator's work and, if the customer so requires, the cabin can be equipped with a music system and heater. Special attention has been paid to ease of maintenance in the J 1080, which was designed for non-stop, heavy work.

The cabin, with its modern design, is easy to access due to the steady, anti-slip steps and wide-opening doors.







Hiab Jonsered's patented MF control enables user-friendly cabin solutions and the maintenance-friendly placement of valves. All noisy components have been placed outside the cabin.



With its heated cabin, ergonomically versatile adjustable seat, good visibility, good lights and an audio system, Hiab Jonsered is an excellent tool for hard work.



The height of the J 1080's ergonomically designed seat can be easily adjusted, and the distance of the controls from the seat changed quickly. The steady, anti-slip and sufficiently wide steps for the control position are an important safety factor.

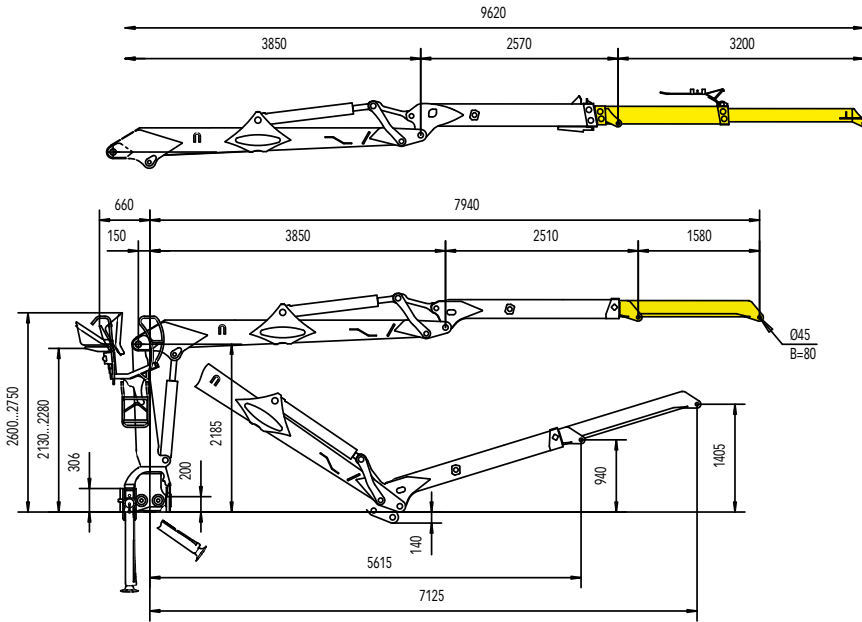


Hiab Jonsered 1080 Specification		J 1080	
		79	DT 96
Lifting capacity	kNm	108	103
Hydraulic outreach, standard	m	7.9	9.6
Stroke of hydraulic boom extension	m	1.6	3.2
Recommended oil flow	fixed displacement pump	l/min 80-90 / 2x70-80	
	variable displacement pump min.	l/min 160	
Working pressure	MPa	23	
Slewing system		double	
Slewing angle	(degrees)°	425	
Max. slope viable at full lifting capacity	(degrees)°	10	
Slewing torque, gross	kNm	26.3	
Weight (Crane with top-seat)	kg	2050	2170

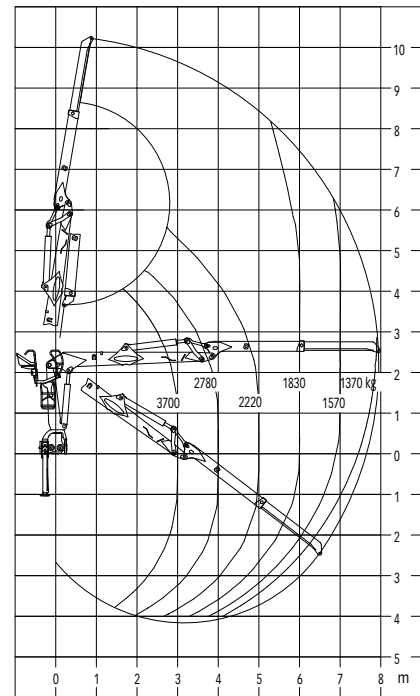


# J 1080-96 DT

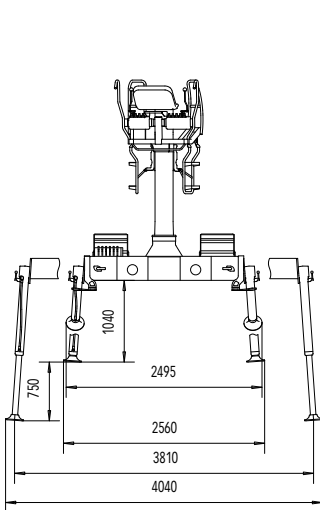
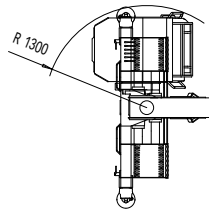
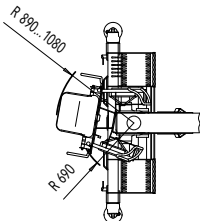
## J 1080-79



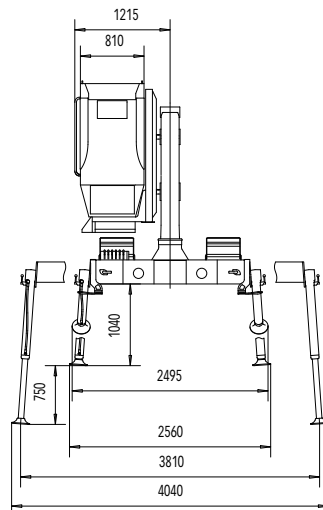
Hiab Jonsered 1080 outreach scheme and lifting capacity diagram



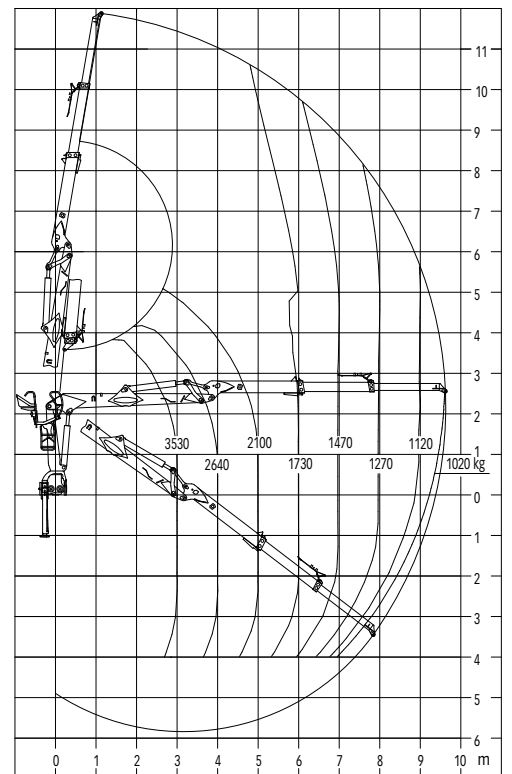
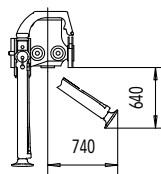
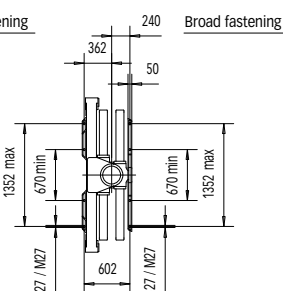
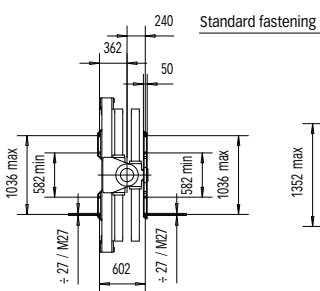
Hiab Jonsered 1080 high seat and cabin



HIGH SEAT



CABIN



# Jonsered 1080 equipment

		High seat	Cabin
Control system	2 levers	▼	▼
	4 levers	▼	▼
Hydraulic system	one-pump-drive	▼	▼
	two-pump-drive	▼	▼
	LS-hydraulic system	▼	▼
Automatic lifting of stabilizers into transport position		●	●
Remote control of stabilizers		■	■
Stabilizer lifting angle 90 degrees		■	■
Stabilizer lifting angle 180 degrees	Powerlift	■	
Stabilizer length alternatives (pcs)		3	3
Stabilizer extension piece		■	■
Extra wide stabilizers	B4600	▼	▼
CE additional safety system			
stop button	C0	■	■
engine stop	C1	■	■
with magnetic valves	C2	■	■
POL (Prevent Over Load)		■	
Adjustable seat height		●	
Seat with heating		●	●
Weather guard		■	
High seat	S	●	
Cabin with heating	Mechanical control	MF	▼
	Digital electrical control	E	▼
Crane damper		■	■
Spotlights	halogen	■	●
	xenon	■	■
First boom cylinder protection		■	■
Central lubrication		■	■
Scale		■	■
Standard colours	red	▼	▼
	black	▼	▼

● = standard

■ = extra

▼ = optional





The well-designed service platform also protects hydraulic devices. They are easy to maintain, since the hinged platform can easily be swivelled out of the way.



The stabilizer lifting angle is easy to adjust and the lifting plate is well protected.



The stabilizer valve controls several functions: stabilizers, stands, cabin raising/lowering etc.



The high-flow filter allows oil required by the powerful crane to flow freely, even in cold weather, and has good dirt tolerance.



The double-slewing system of the J 1080 is accurate and powerful. Its slewing torque is excellent and fast when required!



The pilot control circuit has a separate filter that guarantees trouble-free operation.

**Cargotec** improves the efficiency of cargo flows on land and at sea – wherever cargo is on the move. Cargotec's daughter brands Hiab, Kalmar and MacGregor are recognised leaders in cargo and load handling solutions around the world. Cargotec's global network is positioned close to customers and offers extensive services that ensure the continuous, reliable and sustainable performance of equipment. [www.cargotec.com](http://www.cargotec.com)

