

Hiab Loglift 120 S

Capacity 12 tm





Reliable and proven in timber handling



Hiab Loglift 120 S

The 120 S – a reliable partner in the forest

The Hiab Loglift 120 S is one of our most powerful cranes for handling cut-to-length timber. Despite its moderate size and weight it has the power to handle larger loads than the ordinary cut-to-length timber crane. It is available with three outreach options 7.9, 8.3 or 9.6 metres and can be fitted with an ergonomic high seat or cabin, both with options to make you more comfortable at work.

D-link

An outer boom link provides better lifting capacity close to the base and evens out the angular velocity of the boom tip, resulting in smooth and precise performance. It also prevents capacity loss when working with an extended second boom. The system absorbs pressure peaks and shocks during timber handling making the crane easy to work with.

Double rack slewing

Double rack slewing gives the slewing motion a smooth start and is especially suitable for heavy duty applications. The end cushion dampens slewing effectively when approaching the limit. The double rack design is extremely reliable and also gives a high torque – keeping maintenance costs down and productivity up. Rack and pinion slewing provides reliable operation even on inclines or slopes.

Three-point bridge

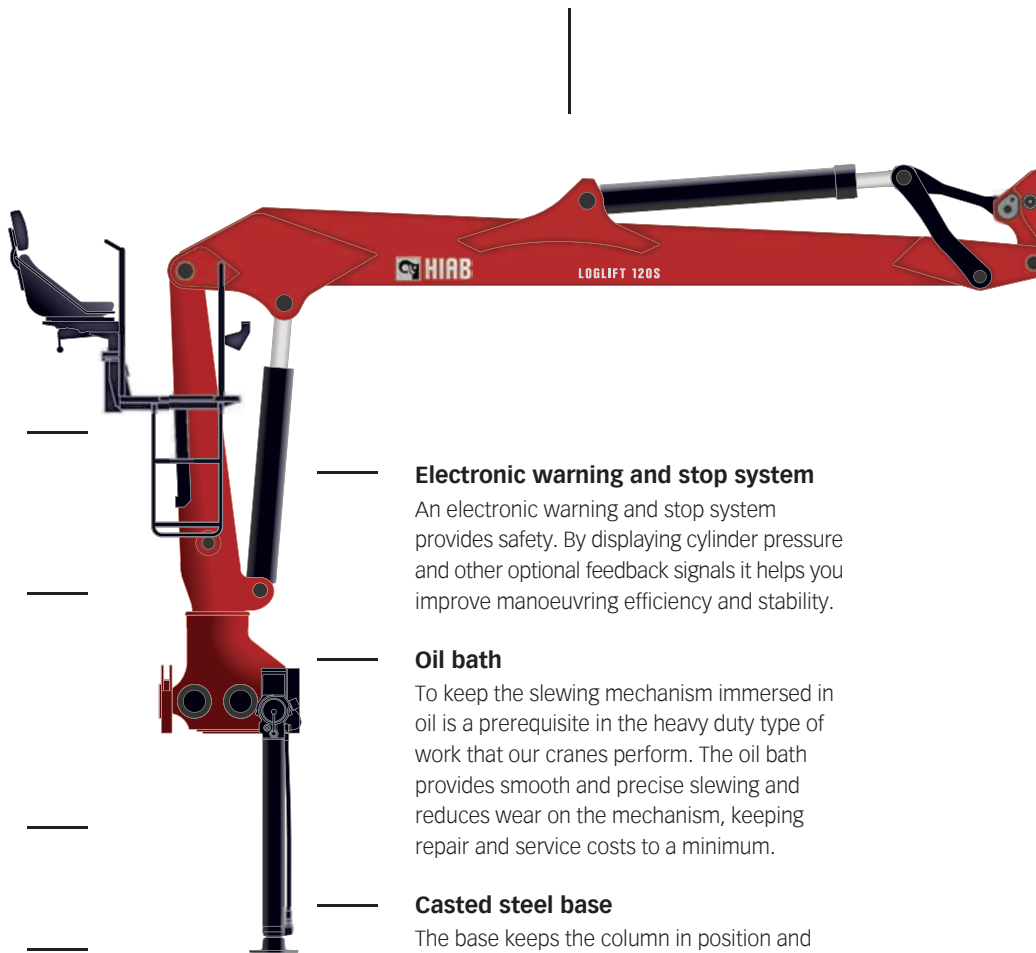
With the three-point bridge the driving characteristics of the truck are only minimally affected by the crane, so that riding in the truck cabin remains a smooth and comfortable experience. In addition the service life of both truck and crane is maximized.

Swivelling footplates

Stabilizer legs have swivelling footplates to perfectly adjust to ground unevenness.

Swivelling couplings

Swivelling couplings increase the lifetime of hydraulic hoses. They can move more freely when the crane rotates which reduces wear. This means you spend less time on repairs and have lower maintenance costs and increased uptime.



Electronic warning and stop system

An electronic warning and stop system provides safety. By displaying cylinder pressure and other optional feedback signals it helps you improve manoeuvring efficiency and stability.

Oil bath

To keep the slewing mechanism immersed in oil is a prerequisite in the heavy duty type of work that our cranes perform. The oil bath provides smooth and precise slewing and reduces wear on the mechanism, keeping repair and service costs to a minimum.

Casted steel base

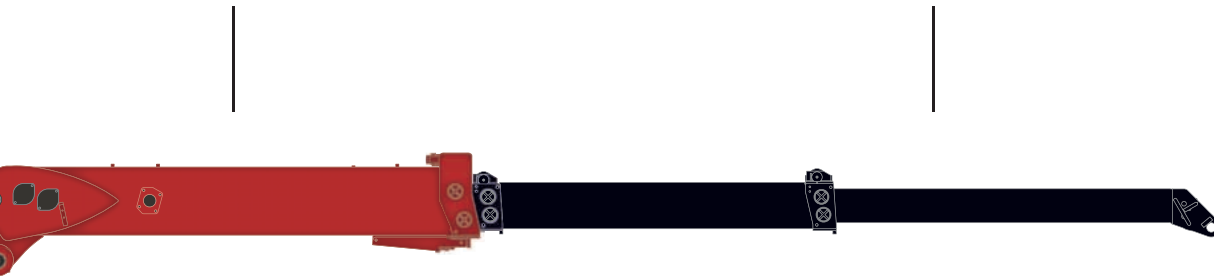
The base keeps the column in position and connects it to the stabilizer beam. In addition to carrying the entire weight of the crane it also hosts the slewing mechanism. This places stringent requirements on the structure of bases. High quality cast steel bases are very sturdy since strain is evenly distributed. Casting is carried out in a quality controlled process to ensure strength.

Extra working lights

Extra working lights improve safety. The standard halogen bulb lights up immediately when turned on and has a soft, yellow light – whereas the Xenon bulb is more powerful and lasts longer. Either type of extra working lights will improve productivity and are very helpful when handling loads in dark conditions.

Side supports for stability

Side supports, fitted on each boom extension, stabilize the boom laterally and minimize play.



JIC couplings

With JIC couplings the time it takes to service a crane is shorter. No additional parts or packing are needed, leading to secure coupling with mechanical tightening only. The service intervals are longer, keeping maintenance costs down.



Features and benefits

The Hiab Loglift 120 S is available with three different outreaches: 7.9 metres outreach with a shorter second boom and single extension, 8.3 metres with longer first boom and single extension or 9.6 metres with a shorter second boom and double telescopic extensions which provide excellent speed. You can have hoses mounted either outside or inside the boom. No matter what outreach you need you can be confident that the 425° slewing angle and D-link will enable swift loading and unloading.

S-boom system

Fast load cycles are especially important in recycling and timber handling. Such operations also require a boom system that endures the strain of repetitive load cycles day in, day out. The S-boom system can be customized for different outreaches. An S-boom crane can be parked stretched out over the load or platform, or over the truck cab. Cranes with an S-boom are built with the crane base in the centre, providing, equal outreach on both sides of the vehicle.

Internal hose routing (optional)

The hydraulic hoses are well protected within the boom system. This keeps maintenance costs down and increases productivity. The highly wear resistant hoses have an impressively long service life and are easy to change. Two functions can be routed to the boom tip, making sure you can use the tools required for your application.



Stabilizers

Automatic stabilizer beam lock

Using hydraulic stabilizer extension beam locks to secure the beam for transport is fast and easy, and requires no manual handling. The beam is automatically locked in the right position by means of a check valve. This is a straightforward solution that adds to the overall safety.

Extra large footplates (optional)

Extra wide circular footplates are available as an accessory. These are useful when the crane has to be stabilized on an area where the surface has to be protected, for example asphalt, or when the ground is unstable.

Controlling

High seat

The high seat is comfortable, ergonomic and easy to access via its spacious steps. The seat can be adjusted upwards, downwards, forwards and backwards – enabling you to find the perfect seating position for your body. You get an excellent view of the working area with a minimum of blind angles. The control valve is strategically tucked in low, underneath the seat. This unique solution improves the driver's safety, takes away disturbing heat, and minimizes the turning radius.

Cabin (optional)

A cabin keeps you sheltered from all types of weather, keeping you comfortable at work. The adjustable seat is designed to keep your back, shoulders and neck relaxed. Two doors, together with strategically placed hand-rails make getting in and out easy. Inside the cabin working conditions are excellent thanks to an efficient air filter and sound proofing. And the skylight window gives great visibility at all times.

Cabin extras

Cabin extras include: Electrical joysticks, air conditioning, roller blinds, radio and CD player, 12 V power outlet, extra lights underneath cabin, diesel or water heating or air fan, and, for added safety, warning flasher and seat belt.



Handling cut-to-length timber

For handling cut-to-length logs, Hiab's solution is the S series. Equipped with an ergonomic control station or a customized cabin, these cranes are stable and effective to use. The powerful slewing system, excellent lifting capacity over the entire reach, combined with accurate and smooth control facilities make working easy.



Accessories complete your solution

Appropriate accessories improve flexibility and productivity. Having the right accessories is an ideal way to increase speed and efficiency. Before you decide which tools you need, take some time to think over your line of business – what services you want to be able to offer customers – now and in future.

Timber grapples

Hiab timber grapples are designed for maximized efficiency and demanding work. There are numerous models, each suited to different applications.

Weighing systems

Accurate weighing of loads may be essential for running your business. This helps you maximize payloads and profitability – while at the same time prevent overloading. A USB stick can be connected to the system making it easy to provide weight and pricing to your customer. The weighing system can be installed in the cabin. It is simple to use, quick to fit, and very reliable.





Learn more about us

Hiab is the global market-leading brand in on-road load handling solutions. Customer-driven Hiab on-road load handling products and solutions are utilised in moving goods and materials on the road, for example in construction sites, forests, industry, waste handling, recycling and by the defence forces.

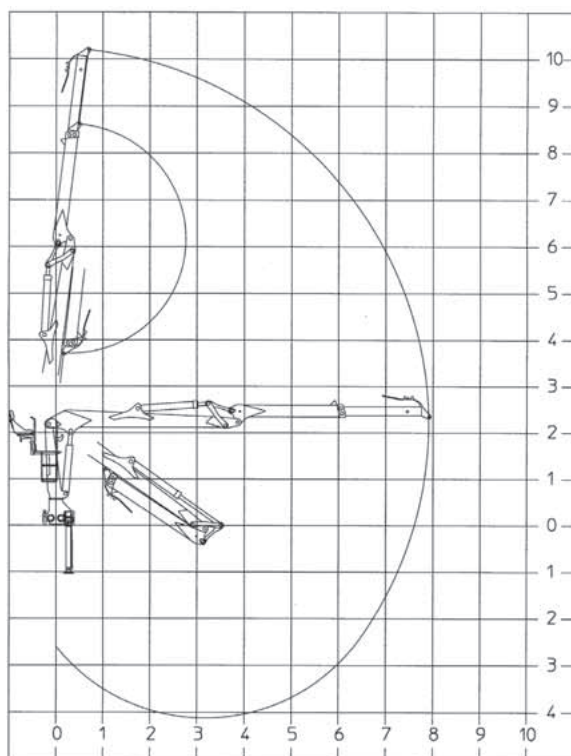
Sales and Service network

Cargotec's global network offers extensive services that ensure the continuous, reliable and sustainable performance of our equipment. We have the most comprehensive distribution network in the industry, supporting all Hiab's customers – through sales companies in 23 countries and 65 independent distribution partners, giving us more than 1500 sales and service outlets. This service network guarantees that we are always close to our customers, ready to give advice on applications and provide service and spare parts.

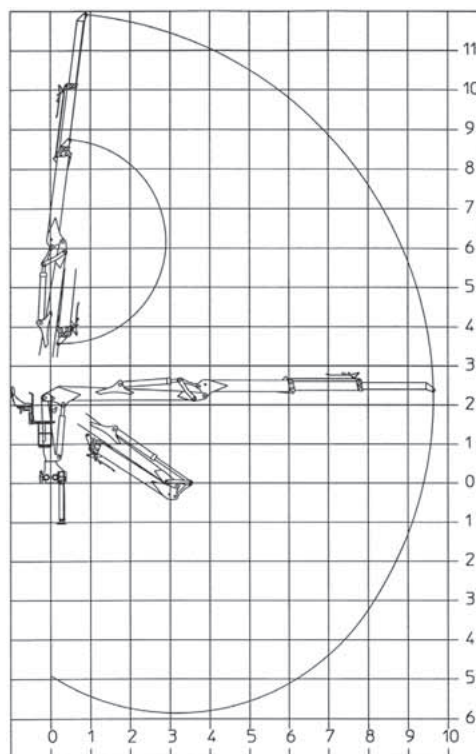
Hiab Loglift 120 S Basic data

Technical data	S 79	S 83	ST 96
Max. lifting capacity, net (kNm)	114	-	108
Max. outreach (m)	7.9	8.3	9.6
Hydraulic boom extension (m)	1.6	1.8	3.2
Outreach / Lifting capacity, standard (m / kg)	3.0 / 3620 4.0 / 2750 5.0 / 2270 6.0 / 1940 7.0 / 1650 7.9 / 1470 - -	3.0 / 3250 4.0 / 2750 5.0 / 2290 6.0 / 1970 7.0 / 1680 8.0 / 1465 - -	3.0 / 3420 4.0 / 2610 5.0 / 2150 6.0 / 1830 7.0 / 1550 8.0 / 1350 9.0 / 1200 9.6 / 1100
Recommended oil flow (l/min)	2x70-80	2x70-80	2x70-80
Power needed at rec. oil flow (kW)	36-71	36-71	36-71
Max. working pressure (MPa)	24	24	24
Slewing system	double	double	double
Slewing angle	425°	425°	425°
Slewing torque, gross (kNm)	27.5	27.5	27.5
Weight, without oil and grapple (kg)	1980	-	2110

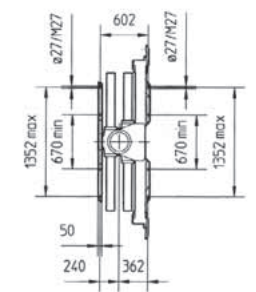
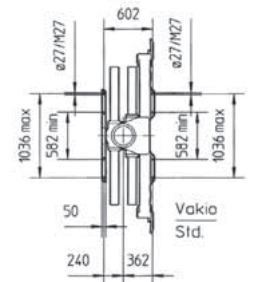
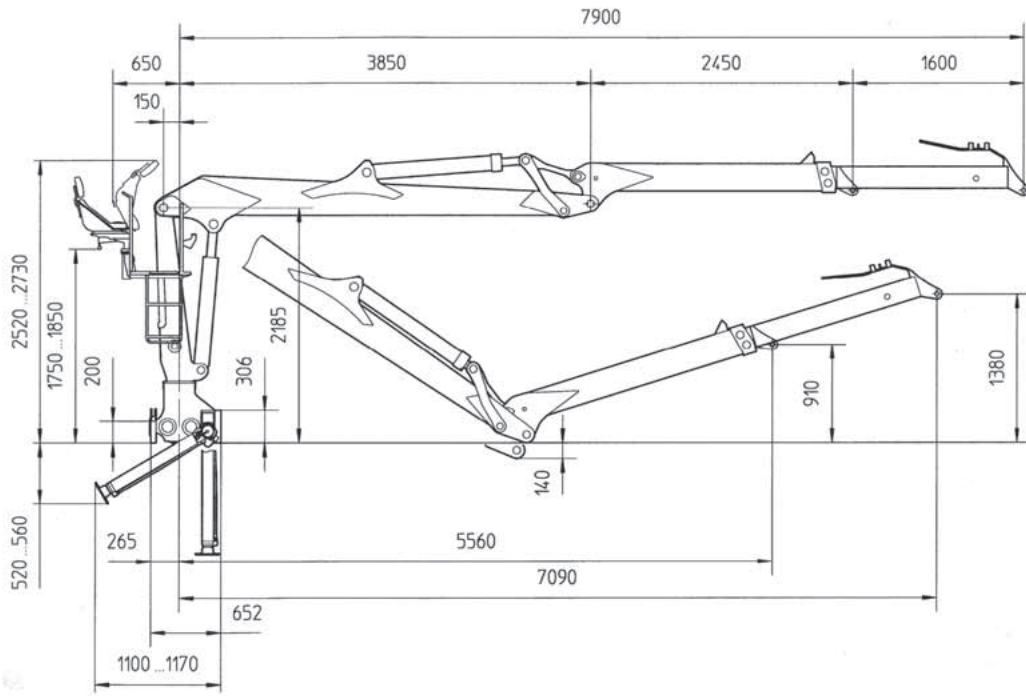
Hiab Loglift 120 S 79



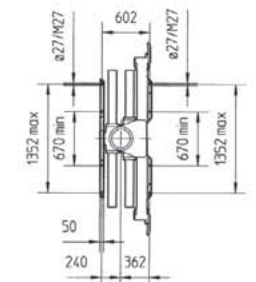
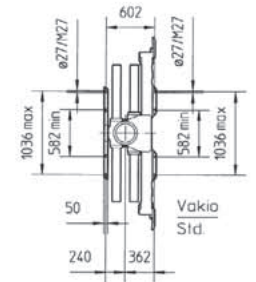
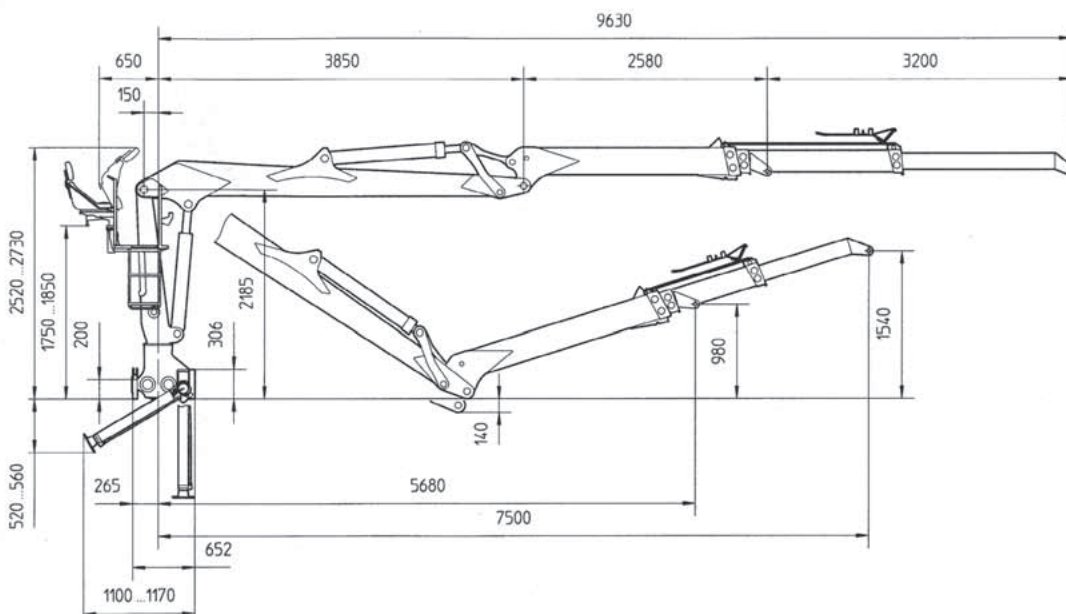
Hiab Loglift 120 ST 96



Hiab Loglift 120 S 79



Hiab Loglift 120 ST 96



Disclaimer. We reserve the right to make changes. Illustrations, drawings and data are not always in accordance with the latest version or standard model in production. The models in the pictures may present special equipment or colours.

Cargotec improves the efficiency of cargo flows on land and at sea – wherever cargo is on the move. Cargotec's daughter brands Hiab, Kalmar and MacGregor are recognised leaders in cargo and load handling solutions around the world.

www.cargotec.com

